



SZABO SCANDIC

Part of Europa Biosite

Produktinformation



Forschungsprodukte & Biochemikalien



Zellkultur & Verbrauchsmaterial



Diagnostik & molekulare Diagnostik



Laborgeräte & Service

Weitere Information auf den folgenden Seiten!
See the following pages for more information!



Lieferung & Zahlungsart

siehe unsere [Liefer- und Versandbedingungen](#)

Zuschläge

- Mindermengenzuschlag
- Trockeneiszuschlag
- Gefahrgutzuschlag
- Expressversand

SZABO-SCANDIC HandelsgmbH

Quellenstraße 110, A-1100 Wien

T. +43(0)1 489 3961-0

F. +43(0)1 489 3961-7

mail@szabo-scandic.com

www.szabo-scandic.com

[linkedin.com/company/szaboscandic](https://www.linkedin.com/company/szaboscandic) 

Data Sheet

Siglec10, Avi-His-tag

Human, Recombinant protein,
C-terminal Avi-His-tag

Catalog #: 100529

Lot #: 191023

Conc.: 0.33 mg/ml

Formulated in: 8 mM Phosphate, pH 7.4,
110 mM NaCl, 2.2 mM KCl, and 20%
glycerol.

Stability: At least 6 months at -80°C . Avoid
freeze/thaw cycles.

References:

1. Chen, G.-Y., *et al.*, *Science*. 2009;
323(5922):1722-1725
2. Kivi, E., *et al.*, *Blood*. 2009;
114(26):5385-5392

Description: Human secreted Sialic Acid Binding Ig Like Lectin 10 (Siglec10), also known as SLG2, PRO940 and SIGLEC-10, GenBank Accession No. NM_033130, a.a. 17-550(end), with a C-terminal Avi-His-tag, expressed in a HEK293 cell expression system. MW = 62 kDa.

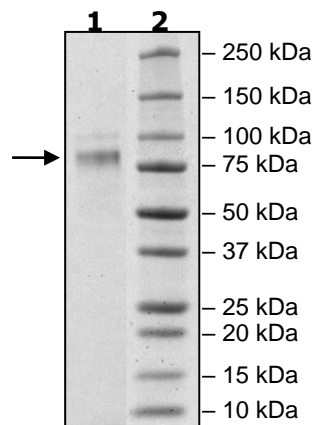
Quality Assurance

4-20% SDS-PAGE Coomassie staining

Lane 1:
2 μg Siglec10
Lane 2:
Protein Marker

MW: 62 kDa

Purity: $\geq 90\%$



OUR PRODUCTS ARE FOR RESEARCH USE ONLY. NOT FOR DIAGNOSTIC OR THERAPEUTIC USE.

To place your order, please contact us by Phone **1.858.202.1401** Fax **1.858.481.8694**

Or you can Email us at: info@bpsbioscience.com

Please visit our website at: www.bpsbioscience.com