



SZABO SCANDIC

Part of Europa Biosite

Produktinformation



Forschungsprodukte & Biochemikalien



Zellkultur & Verbrauchsmaterial



Diagnostik & molekulare Diagnostik



Laborgeräte & Service

Weitere Information auf den folgenden Seiten!
See the following pages for more information!



Lieferung & Zahlungsart

siehe unsere [Liefer- und Versandbedingungen](#)

Zuschläge

- Mindermengenzuschlag
- Trockeneiszuschlag
- Gefahrgutzuschlag
- Expressversand

SZABO-SCANDIC HandelsgmbH

Quellenstraße 110, A-1100 Wien

T. +43(0)1 489 3961-0

F. +43(0)1 489 3961-7

mail@szabo-scandic.com

www.szabo-scandic.com

[linkedin.com/company/szaboscandic](https://www.linkedin.com/company/szaboscandic) 

Data Sheet

Siglec5, Fc Fusion, Avi-tag

Human, Recombinant protein,
C-terminal Fc-Avi-tag

Catalog #: 100533

Lot #: 191203

Conc.: 0.64 mg/ml

Formulated in: 8 mM Phosphate, pH 7.4,
110 mM NaCl, 2.2 mM KCl, and 20%
glycerol.

Stability: At least 6 months at -80°C . Avoid
freeze/thaw cycles.

Description: Human secreted Sialic Acid Binding Ig Like Lectin 5 (Siglec5)-Fc fusion protein, also known as CD33L2 and OBBP2, GenBank Accession No. NM_003830, a.a. 17-441, fused at the C-terminus of the Fc portion of human IgG1, with C-terminal Avi-tag, expressed in a HEK293 cell expression system. MW = 76 kDa. This protein runs at a higher MW by SDS-PAGE due to glycosylation.

References:

1. Angata, T., *et al.*, *FASEB J.* 2006; **20(12)**:1943-2182.
2. Ali, S.R., *et al.*, *JEM.* 2014; **211(6)**:1231-1242

Quality Assurance

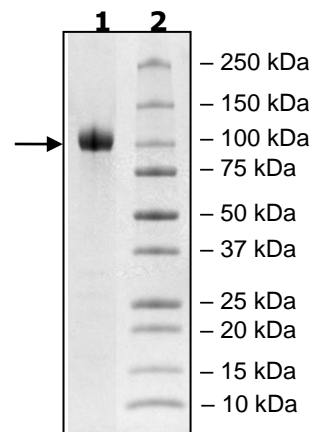
4-20% SDS-PAGE Coomassie staining

Lane 1:
4 μg Siglec5

Lane 2:
Protein Marker

MW: 76 kDa + glycans

Purity: $\geq 90\%$



OUR PRODUCTS ARE FOR RESEARCH USE ONLY. NOT FOR DIAGNOSTIC OR THERAPEUTIC USE.

To place your order, please contact us by Phone **1.858.202.1401** Fax **1.858.481.8694**

Or you can Email us at: info@bpsbioscience.com

Please visit our website at: www.bpsbioscience.com