



SZABO SCANDIC

Part of Europa Biosite

Produktinformation



Forschungsprodukte & Biochemikalien



Zellkultur & Verbrauchsmaterial



Diagnostik & molekulare Diagnostik



Laborgeräte & Service

Weitere Information auf den folgenden Seiten!
See the following pages for more information!



Lieferung & Zahlungsart

siehe unsere [Liefer- und Versandbedingungen](#)

Zuschläge

- Mindermengenzuschlag
- Trockeneiszuschlag
- Gefahrgutzuschlag
- Expressversand

SZABO-SCANDIC HandelsgmbH

Quellenstraße 110, A-1100 Wien

T. +43(0)1 489 3961-0

F. +43(0)1 489 3961-7

mail@szabo-scandic.com

www.szabo-scandic.com

[linkedin.com/company/szaboscandic](https://www.linkedin.com/company/szaboscandic) 

Data Sheet

Siglec6, Fc Fusion, Avi-tag

Human, Recombinant protein,
C-terminal Fc-Avi-Tag

Catalog #: 100535

Lot #: 191210

Conc.: 0.34 mg/ml

Formulated in: 8 mM Phosphate, pH 7.4,
110 mM NaCl, 2.2 mM KCl, and 20%
glycerol.

Stability: At least 6 months at -80°C . Avoid
freeze/thaw cycles.

References:

1. Brinkman-Van der Linden, E.C.M., *et al.*, *Glycobiology*. 2007 Sep 8; **17(9)**:922-931.
2. Patel, N. *et al.*, *JBC*. 1999 Aug 6; **274**:22729-22738.

Description: Human secreted Sialic Acid Binding Ig Like Lectin 6 (Siglec 6), also known as CD33L, CDw327, and OBPP1, GenBank Accession No. NM_001245, a.a. 27-347, fused at the C-terminus of the Fc portion of human IgG1, with C-terminal Avi-tag™, expressed in a HEK293 cell expression system. MW = 64 kDa. This protein runs at a higher molecular weight due to glycosylation.

Quality Assurance

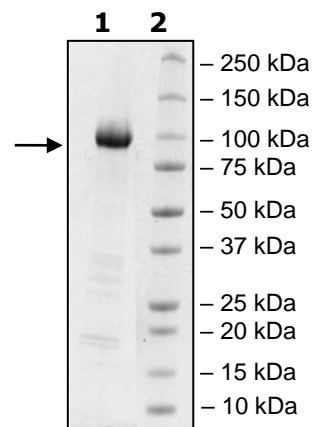
4-20% SDS-PAGE Coomassie staining

Lane 1:
4 μg Siglec6

Lane 2:
Protein Marker

MW: 64 kDa + glycans

Purity: $\geq 90\%$



OUR PRODUCTS ARE FOR RESEARCH USE ONLY. NOT FOR DIAGNOSTIC OR THERAPEUTIC USE.

To place your order, please contact us by Phone **1.858.202.1401** Fax **1.858.481.8694**

Or you can Email us at: info@bpsbioscience.com

Please visit our website at: www.bpsbioscience.com