



SZABO SCANDIC

Part of Europa Biosite

Produktinformation



Forschungsprodukte & Biochemikalien



Zellkultur & Verbrauchsmaterial



Diagnostik & molekulare Diagnostik



Laborgeräte & Service

Weitere Information auf den folgenden Seiten!
See the following pages for more information!



Lieferung & Zahlungsart

siehe unsere [Liefer- und Versandbedingungen](#)

Zuschläge

- Mindermengenzuschlag
- Trockeneiszuschlag
- Gefahrgutzuschlag
- Expressversand

SZABO-SCANDIC HandelsgmbH

Quellenstraße 110, A-1100 Wien

T. +43(0)1 489 3961-0

F. +43(0)1 489 3961-7

mail@szabo-scandic.com

www.szabo-scandic.com

[linkedin.com/company/szaboscandic](https://www.linkedin.com/company/szaboscandic) 

Data Sheet

KRAS (G12C), BODIPY-GDP Loaded, His-tag

Human, Recombinant, N-terminal His-tag
Catalog #: 100537
Lot #: 191023 **Conc.:** 0.12 mg/ml

Formulated in: 20 mM HEPES, pH 7.4,
 150 mM NaCl, and 1 mM DTT.

Stability: At least 6 months at -70°C . Avoid
 freeze/thaw cycles.

References:

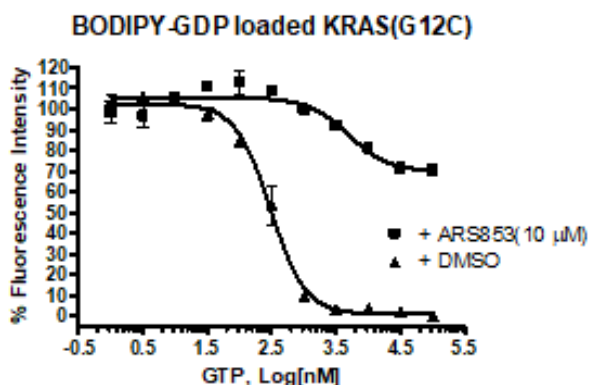
- Ostrem, J. M., *et al.*, *Nature*. 2013;**503**:548-551.
- Patricelli, M. P., *et al.*, *Cancer Discovery*. 2016;**6**:316-329.

Description: Human KRAS also known as C-K-RAS, CFC2, and K-RAS2A with G12C mutation and N-terminal His-tag, GenBank Accession No. NM_033360, a.a. 2-186, expressed in an *E. coli* expression system. MW=23 kDa. KRAS (G12C) His-Tag (BPS Bioscience #100413), is loaded with BODIPY-GDP. Unbound BODIPY-GDP was removed by spin column and it is ready for the GDP/GTP exchange assay. One vial, 60 μg , is enough for 100 reactions.

Assay Conditions: BODIPY-GDP loaded KRAS(G12C) was incubated with 10 μM ARS853 for 1 hour at room temperature and GDP/GTP exchange was initiated by adding EDTA (2.5 mM) and GTP at indicated concentration. After another 1-hour incubation, fluorescence intensity was measured at Ex475(5) nm/520(25) nm.

Application: Useful for KRAS(G12C) Nucleotide Exchange Assay Kit (BPS Bioscience Catalog # 79859), inhibitors screening, and selectivity profiling.

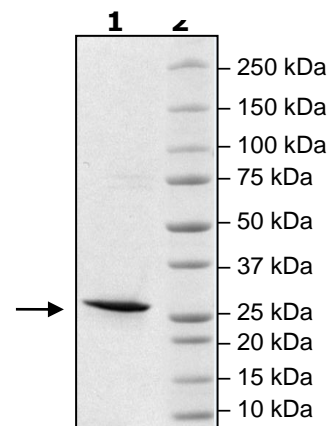
Quality Assurance



**4-20% SDS-PAGE
 Coomassie staining**

Lane 1:
 KRAS (G12C)
Lane 2:
 Protein Marker

MW: 23 kDa
Purity: $\geq 90\%$



OUR PRODUCTS ARE FOR RESEARCH USE ONLY. NOT FOR DIAGNOSTIC OR THERAPEUTIC USE.

To place your order, please contact us by Phone **1.858.202.1401**, Fax **1.858.259.5734**
 Or you can Email us at: info@bpsbioscience.com
 Please visit our website at: www.bpsbioscience.com