



# SZABO SCANDIC

Part of Europa Biosite

## Produktinformation



Forschungsprodukte & Biochemikalien



Zellkultur & Verbrauchsmaterial



Diagnostik & molekulare Diagnostik



Laborgeräte & Service

Weitere Information auf den folgenden Seiten!  
See the following pages for more information!



### Lieferung & Zahlungsart

siehe unsere [Liefer- und Versandbedingungen](#)

### Zuschläge

- Mindermengenzuschlag
- Trockeneiszuschlag
- Gefahrgutzuschlag
- Expressversand

### SZABO-SCANDIC HandelsgmbH

Quellenstraße 110, A-1100 Wien

T. +43(0)1 489 3961-0

F. +43(0)1 489 3961-7

[mail@szabo-scandic.com](mailto:mail@szabo-scandic.com)

[www.szabo-scandic.com](http://www.szabo-scandic.com)

[linkedin.com/company/szaboscandic](https://www.linkedin.com/company/szaboscandic) 

## Data Sheet

### CDK16/Cyclin Y, GST-tags

Human, Recombinant, N-terminal GST-tags

**Catalog #:** 100604

**Lot #:** 191217

**Conc.:** 0.1 mg/ml

**Formulated in:** 50 mM Tris-HCl, pH 7.5, 50 mM NaCl, 10 mM glutathione, 0.25 mM DTT, 0.1 mM EDTA, 0.1 mM PMSF, 25% glycerol.

**Stability:** At least 6 months at  $-80^{\circ}\text{C}$ . Avoid freeze/thaw cycles.

**References:**

1. Meyerson, M. *et al*, *EMBO J.* **11**: 2909-2917, 1992.
2. Knight, J. C. *et al*, *Cytogenet. Cell Genet.* **71**: 155-157, 1995.

**Description:** CDK16/Cyclin Y complex of human **CDK16**, also known as PCK1 and PCTAIRE1 GenBank Accession No. NM\_006201, a.a. 107-496(end) with N-terminal GST-tag, MW=66 kDa, and human **Cyclin Y**, also known as CCNY, CBCP1, CCNX, and CFP1, GenBank Accession No. NM\_145012, a.a. 2-341(end) with N-terminal GST-tag. MW=64 kDa. Co-expressed in a Baculovirus infected Sf9 cell expression system.

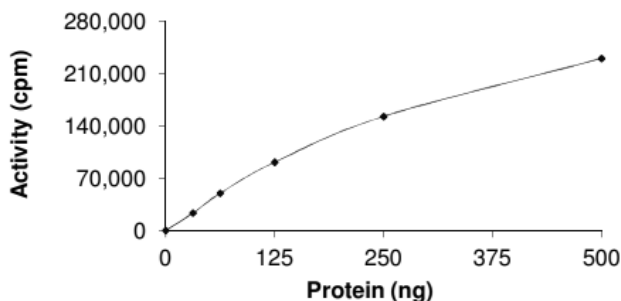
**Specific Activity:**  $\geq 35$  pmol/ $\mu\text{g}/\text{min}$

**Assay Conditions:** 5 mM MOPS, 2.5 mM  $\beta$ -glycerophosphate, 5 mM  $\text{MgCl}_2$ , 1 mM EGTA, 0.4 mM EDTA, 0.05 mM DTT, 50 ng/ml BSA, 2 mM ATP, 200  $\mu\text{g}$  of MBP (or Histone H1) as substrate. Add [ $^{33}\text{P}$ ]-ATP and incubate at  $30^{\circ}\text{C}$  for 15 minutes, then spot reaction on phosphocellulose paper, fix in 1% phosphoric acid, and assay with a scintillation counter.

**Applications:** Useful for the study of enzyme kinetics, screening inhibitors, and selectivity profiling.

## Quality Assurance

### Specific Activity



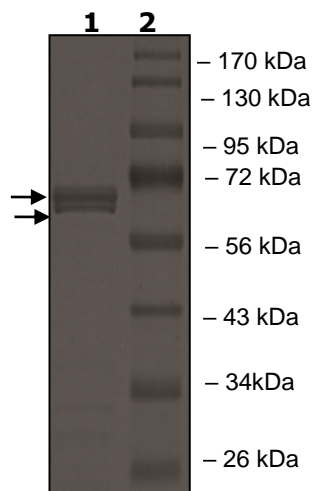
### 4-20% SDS-PAGE Coomassie staining

**Lane 1:**  
CDK16/Cyclin Y

**Lane 2:**  
Protein Marker

**Purity:**  $\geq 85\%$

**MW:**  
CDK16: 66 kDa  
Cyclin Y: 64 kDa



OUR PRODUCTS ARE FOR RESEARCH USE ONLY. NOT FOR DIAGNOSTIC OR THERAPEUTIC USE.

To place your order, please contact us by Phone **1.858.202.1401** Fax **1.858.481.8694**

Or you can Email us at: [info@bpsbioscience.com](mailto:info@bpsbioscience.com)

Please visit our website at: [www.bpsbioscience.com](http://www.bpsbioscience.com)