



SZABO SCANDIC

Part of Europa Biosite

Produktinformation



Forschungsprodukte & Biochemikalien



Zellkultur & Verbrauchsmaterial



Diagnostik & molekulare Diagnostik



Laborgeräte & Service

Weitere Information auf den folgenden Seiten!
See the following pages for more information!



Lieferung & Zahlungsart

siehe unsere [Liefer- und Versandbedingungen](#)

Zuschläge

- Mindermengenzuschlag
- Trockeneiszuschlag
- Gefahrgutzuschlag
- Expressversand

SZABO-SCANDIC HandelsgmbH

Quellenstraße 110, A-1100 Wien

T. +43(0)1 489 3961-0

F. +43(0)1 489 3961-7

mail@szabo-scandic.com

www.szabo-scandic.com

[linkedin.com/company/szaboscandic](https://www.linkedin.com/company/szaboscandic) 

Data Sheet

PSGL1 (CD162), Fc Fusion, Avi-tag

Human, Recombinant protein,
C-terminal Fc-Avi-Tag

Catalog #: 100631

Lot #: 200513

Conc.: 0.38 mg/ml

Formulated in: 8 mM Phosphate, pH 7.4,
110 mM NaCl, 2.2 mM KCl, and 20%
glycerol.

Stability: At least 6 months at -80°C .
Avoid freeze/thaw cycles.

References:

1. Pouyani, T., *et al.*, *Cell*. 1995; **83**: 333-342.
2. McEver R.P., *et al.*, *J. Clin. Invest.* 1997; **100(3)**: 485-492.

Description: Human P-selectin glycoprotein ligand-1 (PSGL1), also known as SELPLG, CD162 and CLA, GenBank Accession No. NM_003006.4, a.a. 18-320 fused at the C-terminus of the Fc portion of human IgG1, with C-terminal Avi-tag, expressed in a HEK293 cell expression system. MW = 60 kDa. This protein runs at a higher molecular weight due to glycosylation.

Quality Assurance

4-20% SDS-PAGE Coomassie staining

Lane 1:

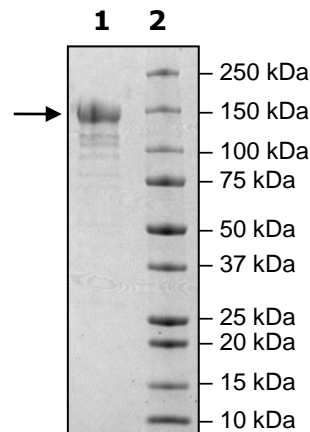
3 μg PSGL1

Lane 2:

Protein Marker

MW: 60 kDa

Purity: $\geq 83\%$



OUR PRODUCTS ARE FOR RESEARCH USE ONLY. NOT FOR DIAGNOSTIC OR THERAPEUTIC USE.

To place your order, please contact us by Phone **1.858.202.1401** Fax **1.858.481.8694**

Or you can Email us at: info@bpsbioscience.com

Please visit our website at: www.bpsbioscience.com