



SZABO SCANDIC

Part of Europa Biosite

Produktinformation



Forschungsprodukte & Biochemikalien



Zellkultur & Verbrauchsmaterial



Diagnostik & molekulare Diagnostik



Laborgeräte & Service

Weitere Information auf den folgenden Seiten!
See the following pages for more information!



Lieferung & Zahlungsart

siehe unsere [Liefer- und Versandbedingungen](#)

Zuschläge

- Mindermengenzuschlag
- Trockeneiszuschlag
- Gefahrgutzuschlag
- Expressversand

SZABO-SCANDIC HandelsgmbH

Quellenstraße 110, A-1100 Wien

T. +43(0)1 489 3961-0

F. +43(0)1 489 3961-7

mail@szabo-scandic.com

www.szabo-scandic.com

[linkedin.com/company/szaboscandic](https://www.linkedin.com/company/szaboscandic) 

Data Sheet

NKG2A, His-Avi-Tag

Human, Recombinant, N-terminal His-Avi-Tag

Catalog #: 100638

Lot#: 200211

Conc.: 1.65 mg/ml

Formulated in: 8 mM phosphate, pH 7.4, 110 mM NaCl, 2.2 mM KCl, and 20% glycerol.

Stability: At least 6 months at -80°C . Avoid freeze/thaw cycles.

Description: Human NKG2A, also known as Killer Cell Lectin Like Receptor C1, CD159 Antigen-Like Family Member A and NK Cell Receptor A, GenBank Accession No. NM_002259.4, a.a. 94-233(end) with an N-terminal His-Avi-TagTM, expressed in a HEK293 cell expression system. MW = 20 kDa. This protein runs at a higher molecular weight due to glycosylation.

References:

1. Braud, V.M. *et al.*, *Nature*. 1998; **391**: 795-799.
2. Lee, N. *et al.*, *PNAS*. 1998; **95(9)**: 5199-5204.

Quality Assurance

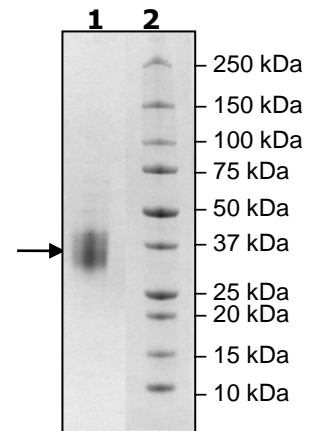
4-20% SDS-PAGE Coomassie staining

Lane 1:
4 μg NKG2A

Lane 2:
Protein Marker

MW: 20 kDa+glycans

Purity: $\geq 90\%$



OUR PRODUCTS ARE FOR RESEARCH USE ONLY. NOT FOR DIAGNOSTIC OR THERAPEUTIC USE.

To place your order, please contact us by Phone **1.858.202.1401** Fax **1.858.481.8694**

Or you can Email us at: info@bpsbioscience.com

Please visit our website at: www.bpsbioscience.com