



SZABO SCANDIC

Part of Europa Biosite

Produktinformation



Forschungsprodukte & Biochemikalien



Zellkultur & Verbrauchsmaterial



Diagnostik & molekulare Diagnostik



Laborgeräte & Service

Weitere Information auf den folgenden Seiten!
See the following pages for more information!



Lieferung & Zahlungsart

siehe unsere [Liefer- und Versandbedingungen](#)

Zuschläge

- Mindermengenzuschlag
- Trockeneiszuschlag
- Gefahrgutzuschlag
- Expressversand

SZABO-SCANDIC HandelsgmbH

Quellenstraße 110, A-1100 Wien

T. +43(0)1 489 3961-0

F. +43(0)1 489 3961-7

mail@szabo-scandic.com

www.szabo-scandic.com

[linkedin.com/company/szaboscandic](https://www.linkedin.com/company/szaboscandic) 

Data Sheet

GppNHp loaded KRAS (G12C), His-Tag

Human, Recombinant, N-terminal His-tag

Catalog #: 100641

Lot #: 200207-T **Conc.:** 0.43 mg/ml

Formulated in: 20 mM HEPES, pH 7.4, 150 mM NaCl, and 1 mM DTT.

Stability: At least 6 months at -70°C. Avoid freeze/thaw cycles.

References:

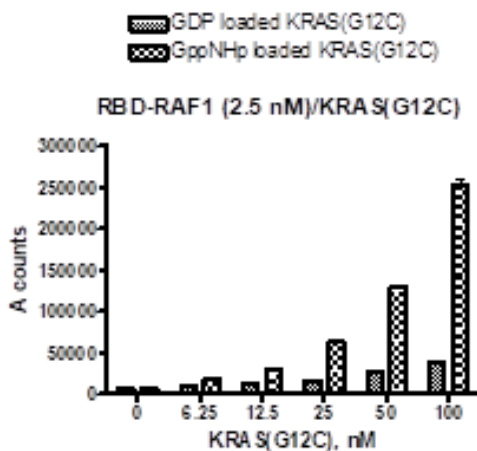
1. Ostrem, J. M., *et al.*, *Nature*. 2013;**503**:548-551.
2. Patricelli, M. P., *et al.*, *Cancer Discovery*. 2016;**6**:316-329.

Description: Human KRAS, also known as C-K-RAS, CFC2, and K-RAS2A, GenBank Accession No. NM_033360, a.a. 2-186 with G12C mutation and N-terminal His-tag, expressed in an *E. coli* expression system. MW=23 kDa. KRAS (G12C) His-Tag (BPS Bioscience #100413), is loaded with GppNHp (non-hydrolyzable GTP analog). Unbound GppNHp was removed by spin column. Ready for use in KRAS-RAF binding studies or inhibitor assays.

Assay Conditions: GppNHp loaded KRAS(G12C) was tested for binding to the RBD of Raf1. GppNHp loaded KRAS(G12C) was compared with GDP-loaded KRAS(G12C) (BPS Bioscience #100640) for RBD-RAF1 (BPS Bioscience #100519) binding by Bio-layer Interferometry (GATOR, Probe Life) and AlphaScreening (PerkinElmer).

Applications: Useful for nucleotide exchange assay, KRAS(G12C) inhibitors screening, and selectivity profiling.

Quality Assurance



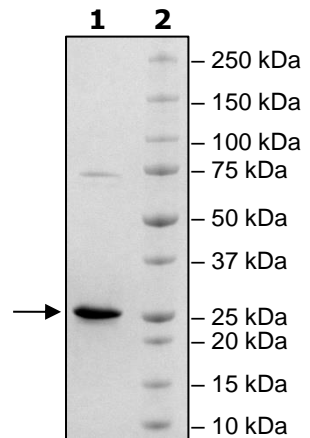
**4-20% SDS-PAGE
Coomassie staining**

Lane 1:
2µg KRAS-GppNHp

Lane 2:
Protein Marker

MW: 23 kDa

Purity: ≥90%



OUR PRODUCTS ARE FOR RESEARCH USE ONLY. NOT FOR DIAGNOSTIC OR THERAPEUTIC USE.

To place your order, please contact us by Phone **1.858.202.1401** Fax **1.858.481.8694**

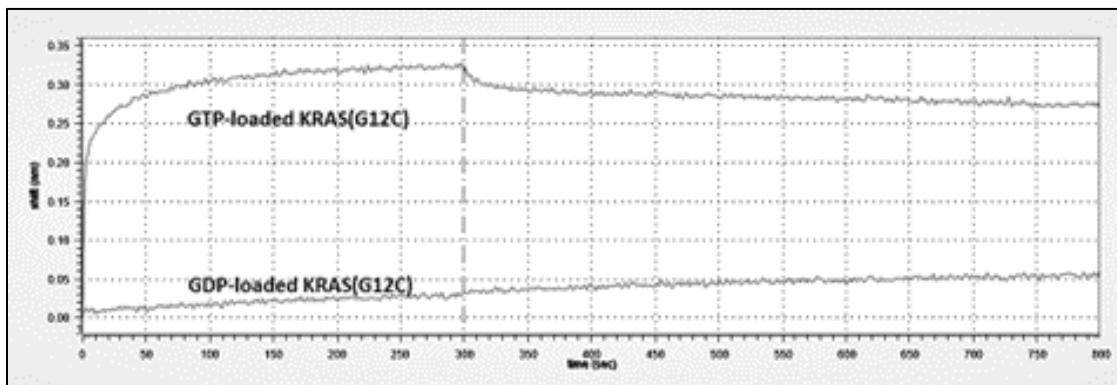
Or you can Email us at: info@bpsbioscience.com

Please visit our website at: www.bpsbioscience.com



6042 Cornerstone Court West, Suite B
San Diego, CA 92121
Tel: 1.858.202.1401
Fax: 1.858.481.8694
Email: info@bpsbioscience.com

Bio-layer Interferometry (GATOR)



OUR PRODUCTS ARE FOR RESEARCH USE ONLY. NOT FOR DIAGNOSTIC OR THERAPEUTIC USE.

To place your order, please contact us by Phone **1.858.202.1401** Fax **1.858.481.8694**
Or you can Email us at: info@bpsbioscience.com
Please visit our website at: www.bpsbioscience.com