



# SZABO SCANDIC

Part of Europa Biosite

## Produktinformation



Forschungsprodukte & Biochemikalien



Zellkultur & Verbrauchsmaterial



Diagnostik & molekulare Diagnostik



Laborgeräte & Service

Weitere Information auf den folgenden Seiten!  
See the following pages for more information!



### Lieferung & Zahlungsart

siehe unsere [Liefer- und Versandbedingungen](#)

### Zuschläge

- Mindermengenzuschlag
- Trockeneiszuschlag
- Gefahrgutzuschlag
- Expressversand

### SZABO-SCANDIC HandelsgmbH

Quellenstraße 110, A-1100 Wien

T. +43(0)1 489 3961-0

F. +43(0)1 489 3961-7

[mail@szabo-scandic.com](mailto:mail@szabo-scandic.com)

[www.szabo-scandic.com](http://www.szabo-scandic.com)

[linkedin.com/company/szaboscandic](https://www.linkedin.com/company/szaboscandic) 

## Data Sheet

### StcE, His-Tag

Human, Recombinant, N-terminal His-tag

**Catalog #:** 100658

**Lot#:** 200310

**Conc.:** 2.78 mg/ml

**Description:** Human StcE, also known as tagA and Secreted protease of C1 esterase, GenBank Accession No. AY714880.1, a.a. 36-898(end) with N-terminal His-tag, expressed in an *E. coli* cell expression system. MW =97 kDa.

**Formulated in:** 40 mM Tris-HCl, pH 8.0, 110 mM NaCl, 2.2 mM KCl, 0.04% Tween20, 3 mM DTT, 20% glycerol, 220 mM Imidazole.

**Stability:** At least 6 months at  $-80^{\circ}\text{C}$ . Avoid freeze/thaw cycles.

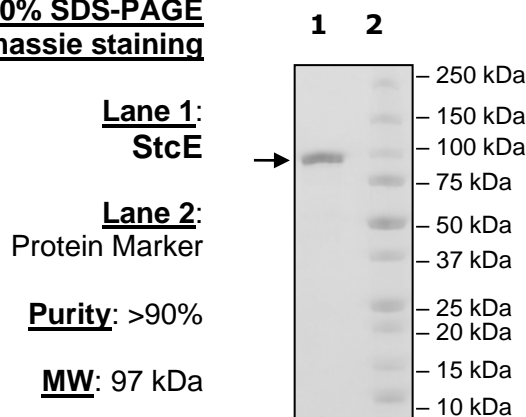
#### References:

1. Latham, W. W. *et al.*, *Molec. Microbio.* **45(2)**: 277-288 (2002).
2. Grysb, T.E. *et al.*, *Infect. & Immun.* **73(3)**: 1295-1303 (2005).

---

## Quality Assurance

### 4-20% SDS-PAGE Coomassie staining



OUR PRODUCTS ARE FOR RESEARCH USE ONLY. NOT FOR DIAGNOSTIC OR THERAPEUTIC USE.

To place your order, please contact us by Phone **1.858.202.1401** Fax **1.858.481.8694**

Or you can Email us at: [info@bpsbioscience.com](mailto:info@bpsbioscience.com)

Please visit our website at: [www.bpsbioscience.com](http://www.bpsbioscience.com)