



SZABO SCANDIC

Part of Europa Biosite

Produktinformation



Forschungsprodukte & Biochemikalien



Zellkultur & Verbrauchsmaterial



Diagnostik & molekulare Diagnostik



Laborgeräte & Service

Weitere Information auf den folgenden Seiten!
See the following pages for more information!



Lieferung & Zahlungsart

siehe unsere [Liefer- und Versandbedingungen](#)

Zuschläge

- Mindermengenzuschlag
- Trockeneiszuschlag
- Gefahrgutzuschlag
- Expressversand

SZABO-SCANDIC HandelsgmbH

Quellenstraße 110, A-1100 Wien

T. +43(0)1 489 3961-0

F. +43(0)1 489 3961-7

mail@szabo-scandic.com

www.szabo-scandic.com

[linkedin.com/company/szaboscandic](https://www.linkedin.com/company/szaboscandic) 

Data Sheet

ACE2, His-Tag, EU labeled

Human, Recombinant, C-terminal His-tag,
 EU labeled

Catalog #: 100705

Lot #: 200413 **Conc:** 2.41 mg/ml

Formulated in: 8 mM phosphate, 110 mM NaCl, 2.2 mM KCl, 20% glycerol.

Stability: At least 6 months at -80°C. Avoid freeze/thaw cycles.

References:

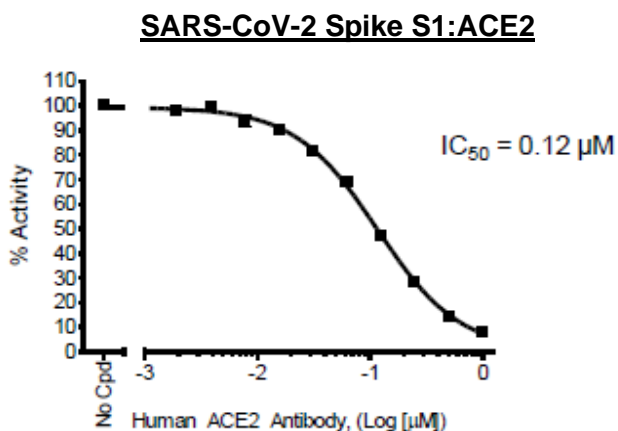
1. Keider, S., *et al.*, *Nephrology Dialysis Transplantation*. 2007 **22(2)**: 597-601.
2. Donoghue, M., *et al.*, *Circulation Research*. 2002 Sep;**87**:e1-e9

Description: Human Angiotensin converting enzyme 2 (ACE2) also known ACEH, GenBank Accession No. NP_068576.1, a.a. 18-740, with a C-terminal His-tag, Eu labeled, expressed in a HEK293 expression system. MW=85 kDa. This protein runs at a higher MW by SDS-PAGE due to glycosylation.

Assay Conditions: Activity was determined using the Spike S1-Biotin (SARS-CoV-2): ACE2 TR-FRET Assay Kit (BPS Bioscience #79949). The ACE2 antibody was incubated with biotinylated Spike S1 (BPS Bioscience #100679), Eu-labeled ACE2 (BPS Bioscience #100705), and the dye-labeled acceptor for one hour. Then the TR-FRET signal was measured using a fluorescence reader.

Applications: As an exopeptidase, ACE2 is useful for the study of enzyme kinetics and to screen for inhibitors. As a cell receptor for coronaviruses infection, including 2019-nCoV, ACE2 is useful for the study of protein-protein interactions.

Quality Assurance



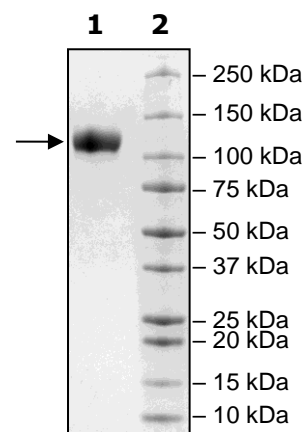
4-20% SDS-PAGE Coomassie staining

Lane 1:
2µg ACE-2

Lane 2:
Protein Marker

MW:
85 kDa + glycans

Purity: >90%



OUR PRODUCTS ARE FOR RESEARCH USE ONLY. NOT FOR DIAGNOSTIC OR THERAPEUTIC USE.

To place your order, please contact us by Phone **1.858.202.1401** Fax **1.858.481.8694**
 Or you can Email us at: info@bpsbioscience.com
 Please visit our website at: www.bpsbioscience.com



6042 Cornerstone Court West, Suite B
San Diego, CA 92121
Tel: 1.858.202.1401
Fax: 1.858.481.8694
Email: info@bpsbioscience.com

OUR PRODUCTS ARE FOR RESEARCH USE ONLY. NOT FOR DIAGNOSTIC OR THERAPEUTIC USE.

To place your order, please contact us by Phone **1.858.202.1401** Fax **1.858.481.8694**
Or you can Email us at: info@bpsbioscience.com
Please visit our website at: www.bpsbioscience.com