



SZABO SCANDIC

Part of Europa Biosite

Produktinformation



Forschungsprodukte & Biochemikalien



Zellkultur & Verbrauchsmaterial



Diagnostik & molekulare Diagnostik



Laborgeräte & Service

Weitere Information auf den folgenden Seiten!
See the following pages for more information!



Lieferung & Zahlungsart

siehe unsere [Liefer- und Versandbedingungen](#)

Zuschläge

- Mindermengenzuschlag
- Trockeneiszuschlag
- Gefahrgutzuschlag
- Expressversand

SZABO-SCANDIC HandelsgmbH

Quellenstraße 110, A-1100 Wien

T. +43(0)1 489 3961-0

F. +43(0)1 489 3961-7

mail@szabo-scandic.com

www.szabo-scandic.com

[linkedin.com/company/szaboscandic](https://www.linkedin.com/company/szaboscandic) 

Data Sheet

3CL Protease, MBP-Factor Xa-tag (SARS-CoV-2)

SARS-CoV-2, Recombinant, N-terminal
MBP-Factor Xa-tag
Catalog #: 100707
Lot #: 200416-1 **Conc:** 1.87 mg/ml

Description: Severe acute respiratory Coronavirus 2 3C-like protease (SARS-CoV-2 3CL Protease), GenBank Accession No. YP_009725301, a.a. 1-306(full length), with an N-terminal MBP-Factor Xa-tag, expressed in an *E. coli* expression system, MW=77.5 kDa.

Formulated in: 40 mM Tris-HCl, pH 8.0, 110 mM NaCl, 2.2 mM KCl, 20% glycerol, 3 mM DTT, 8 mM maltose.

Stability: At least 6 months at -80°C. Avoid freeze/thaw cycles.

References:

1. Muramatsu, T. *et al.*, *PNAS*. 2016 Nov; **113(46)**:12997-13002.
2. Hsu, M.F. *et al.*, *JBC*. 2005 Mar; **280**:31257-31266.

Quality Assurance

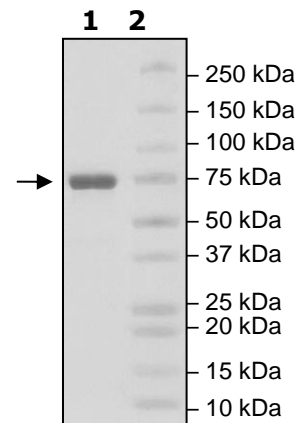
4-20% SDS-PAGE Coomassie staining

Lane 1:
3CL protease

Lane 2:
Protein Marker

MW: 77.5 kDa

Purity: ≥90%



OUR PRODUCTS ARE FOR RESEARCH USE ONLY. NOT FOR DIAGNOSTIC OR THERAPEUTIC USE.

To place your order, please contact us by Phone **1.858.202.1401** Fax **1.858.481.8694**
Or you can Email us at: info@bpsbioscience.com
Please visit our website at: www.bpsbioscience.com