



SZABO SCANDIC

Part of Europa Biosite

Produktinformation



Forschungsprodukte & Biochemikalien



Zellkultur & Verbrauchsmaterial



Diagnostik & molekulare Diagnostik



Laborgeräte & Service

Weitere Information auf den folgenden Seiten!
See the following pages for more information!



Lieferung & Zahlungsart

siehe unsere [Liefer- und Versandbedingungen](#)

Zuschläge

- Mindermengenzuschlag
- Trockeneiszuschlag
- Gefahrgutzuschlag
- Expressversand

SZABO-SCANDIC HandelsgmbH

Quellenstraße 110, A-1100 Wien

T. +43(0)1 489 3961-0

F. +43(0)1 489 3961-7

mail@szabo-scandic.com

www.szabo-scandic.com

[linkedin.com/company/szaboscandic](https://www.linkedin.com/company/szaboscandic) 

Data Sheet

PLPro, His-tag (SARS-CoV-2)

SARS-CoV-2, Recombinant, N-terminal His-tag
Catalog #: 100735
Lot #: 200427 **Conc:** 0.20 mg/ml

Formulated in: 50 mM sodium phosphate, pH 7.5, 300 mM NaCl, 150 mM imidazole, 1 mM DTT, 10% glycerol.

Stability: At least 6 months at -80°C. Avoid freeze/thaw cycles.

References:

1. Wu, F., *et al.*, *Nature*. 2020; **579**:265-269.
2. Baez-Santos, Y., *et al.*, *Antiviral Res.* 2015;**115**: 21-38.

Description: SARS-Cov-2 papain-like protease (PLPro), part of a large replicase polyprotein 1ab (E1564-Y1882), GenBank Accession No. QHD43415, with a N-terminal His-tag, expressed in an *E. coli* expression system. MW=38 kDa.

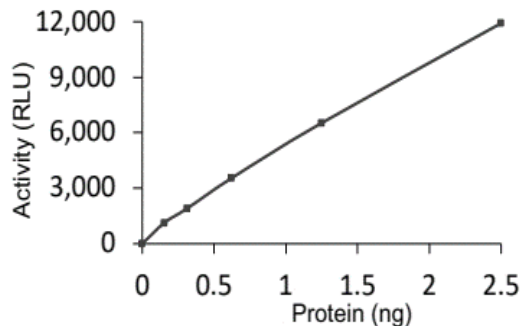
Specific Activity: 29 pmol/min/μg

Assay Conditions: PLPro (SARS-CoV-2) was diluted with DUB reaction buffer and incubated at room temp for 30 minutes. Plate read using KinaseGlo (Promega, #E7031).

Applications: Useful for studying protein binding and screening small molecules.

Quality Assurance

Specific Activity



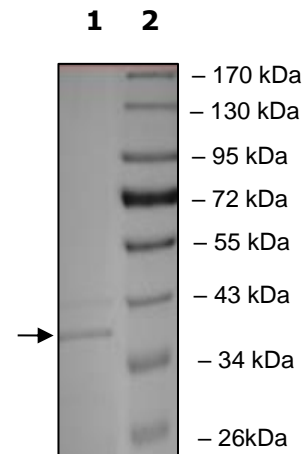
10-20% SDS-PAGE
Coomassie staining

Lane 1:
 PLPro

Lane 2:
 Protein Marker

Purity: ≥80%

MW: 38 kDa



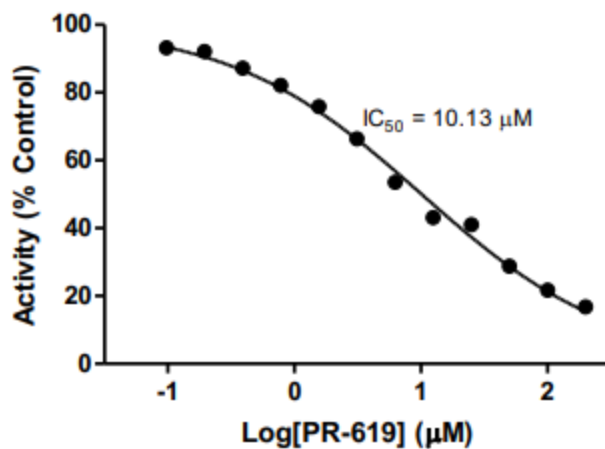
OUR PRODUCTS ARE FOR RESEARCH USE ONLY. NOT FOR DIAGNOSTIC OR THERAPEUTIC USE.

To place your order, please contact us by Phone **1.858.202.1401** Fax **1.858.481.8694**
 Or you can Email us at: info@bpsbioscience.com
 Please visit our website at: www.bpsbioscience.com



6042 Cornerstone Court West, Suite B
San Diego, CA 92121
Tel: 1.858.202.1401
Fax: 1.858.481.8694
Email: info@bpsbioscience.com

PLPro Inhibition



PLpro inhibition in the presence of various concentrations of PR-619, a broad spectrum and reversible DUB inhibitor.

OUR PRODUCTS ARE FOR RESEARCH USE ONLY. NOT FOR DIAGNOSTIC OR THERAPEUTIC USE.

To place your order, please contact us by Phone **1.858.202.1401** Fax **1.858.481.8694**
Or you can Email us at: info@bpsbioscience.com
Please visit our website at: www.bpsbioscience.com