



# SZABO SCANDIC

Part of Europa Biosite

## Produktinformation



Forschungsprodukte & Biochemikalien



Zellkultur & Verbrauchsmaterial



Diagnostik & molekulare Diagnostik



Laborgeräte & Service

Weitere Information auf den folgenden Seiten!  
See the following pages for more information!



### Lieferung & Zahlungsart

siehe unsere [Liefer- und Versandbedingungen](#)

### Zuschläge

- Mindermengenzuschlag
- Trockeneiszuschlag
- Gefahrgutzuschlag
- Expressversand

### SZABO-SCANDIC HandelsgmbH

Quellenstraße 110, A-1100 Wien

T. +43(0)1 489 3961-0

F. +43(0)1 489 3961-7

[mail@szabo-scandic.com](mailto:mail@szabo-scandic.com)

[www.szabo-scandic.com](http://www.szabo-scandic.com)

[linkedin.com/company/szaboscandic](https://www.linkedin.com/company/szaboscandic) 

## Data Sheet

### **3CL Protease, MBP-tag, His-tag (SARS-CoV)**

SARS-CoV, Recombinant, N-terminal  
MBP-tag, C-terminal His-tag

**Catalog #:** 100739

**Lot #:** 200624

**Conc:** 2.0 mg/ml

**Formulated in:** 40 mM Tris-HCl, pH 8.0,  
110 mM NaCl, 2.2 mM KCl, 20% glycerol, 3  
mM DTT, 8 mM maltose.

**Stability:** At least 6 months at -80°C. *Avoid  
freeze/thaw cycles.*

#### **References:**

1. Zhang, L., *et al.*, *Science*, 2020 Apr;  
**368(6489):** 409-412.
2. Hsu, M.F. *et al.*, *JBC*. 2005 Mar;  
**280:**31257-31266.

**Description:** Severe acute respiratory  
Coronavirus 3C-like protease (SARS-CoV  
3CL Protease), a.a. 1-306(full length), with  
an N-terminal MBP-tag, and C-terminal His-  
tag, expressed in an *E. coli* expression  
system, MW=78.5 kDa.

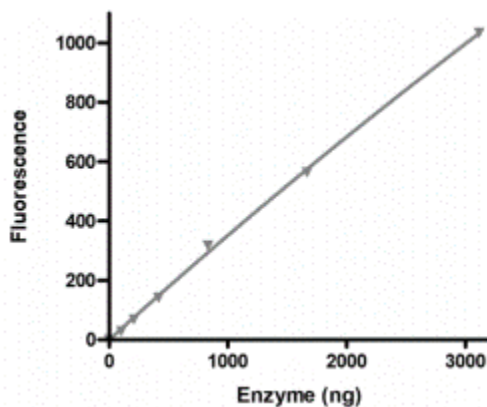
**Specific Activity:** >25 pmol/min/μg

**Assay Conditions:** Add 40 μl of 3CL  
protease diluted in 1x assay buffer. Start  
the reaction by adding 10 ul of diluted  
substrate. Incubate 1h. Read fluorescence  
(λ<sub>exc</sub>=360 nm, λ<sub>em</sub>=460 nm). Total volume  
is 50 μl.

**Applications:** Useful for the study of  
enzyme kinetics, screening inhibitors, and  
selectivity profiling.

### **Quality Assurance**

#### **3CL Protease SARS-CoV Activity**



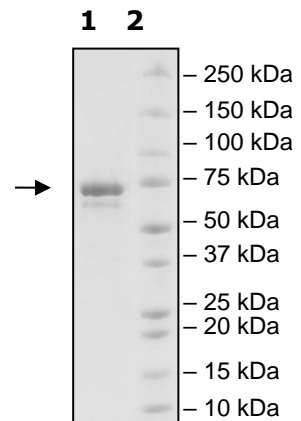
#### **4-20% SDS-PAGE Coomassie staining**

**Lane 1:**  
3CL protease

**Lane 2:**  
Protein Marker

**MW:** 78.5 kDa

**Purity:** ≥85%



OUR PRODUCTS ARE FOR RESEARCH USE ONLY. NOT FOR DIAGNOSTIC OR THERAPEUTIC USE.

To place your order, please contact us by Phone **1.858.202.1401** Fax **1.858.481.8694**

Or you can Email us at: [info@bpsbioscience.com](mailto:info@bpsbioscience.com)

Please visit our website at: [www.bpsbioscience.com](http://www.bpsbioscience.com)