



# SZABO SCANDIC

Part of Europa Biosite

## Produktinformation



Forschungsprodukte & Biochemikalien



Zellkultur & Verbrauchsmaterial



Diagnostik & molekulare Diagnostik



Laborgeräte & Service

Weitere Information auf den folgenden Seiten!  
See the following pages for more information!



### Lieferung & Zahlungsart

siehe unsere [Liefer- und Versandbedingungen](#)

### Zuschläge

- Mindermengenzuschlag
- Trockeneiszuschlag
- Gefahrgutzuschlag
- Expressversand

### SZABO-SCANDIC HandelsgmbH

Quellenstraße 110, A-1100 Wien

T. +43(0)1 489 3961-0

F. +43(0)1 489 3961-7

[mail@szabo-scandic.com](mailto:mail@szabo-scandic.com)

[www.szabo-scandic.com](http://www.szabo-scandic.com)

[linkedin.com/company/szaboscandic](https://www.linkedin.com/company/szaboscandic) 

## Data Sheet

### 3CL Protease, His-tag (SARS-CoV)

SARS-CoV, Recombinant, C-terminal His-tag

**Catalog #:** 100807

**Lot #:** 200629

**Conc:** 0.40 mg/ml

**Formulated in:** 40 mM Tris-HCl, pH 8.0,  
 110 mM NaCl, 2.2 mM KCl, 0.04%  
 Tween20, 20% glycerol, 3 mM DTT, 200  
 mM Imidazole

**Stability:** At least 6 months at -80°C. *Avoid freeze/thaw cycles.*

**References:**

1. Zhang, L., *et al.*, *Science*, 2020 Apr; **368(6489)**: 409-412.
2. Hsu, M.F. *et al.*, *JBC*. 2005 Mar; **280**:31257-31266.

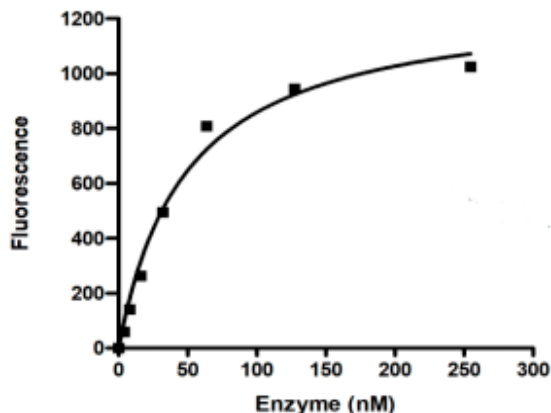
**Description:** Severe acute respiratory Coronavirus 3C-like protease (SARS-CoV 3CL Protease), GenBank Accession No. 1UK3\_B, a.a. 1-306(full length), with a C-terminal His-tag, expressed in an *E. coli* expression system, MW=36 kDa.

**Assay Conditions:** Add 40 µl of 3CL protease diluted in 1x assay buffer. Start the reaction by adding 10 µl of diluted substrate. Immediately place plate in plate reader. Read kinetics for 60 min ( $\lambda_{exc}$ =360 nm,  $\lambda_{em}$ =460 nm). Total volume is 50 µl.

**Applications:** Useful for the study of enzyme kinetics, screening inhibitors, and selectivity profiling.

### Quality Assurance

**3CL Protease (SARS-CoV) Activity**



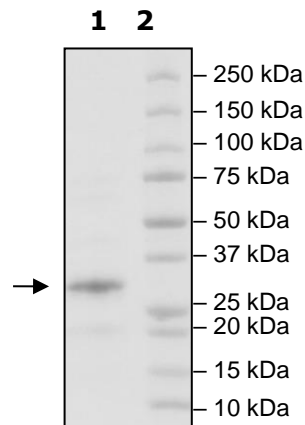
**4-20% SDS-PAGE**  
**Coomassie staining**

**Lane 1:**  
3CL protease

**Lane 2:**  
Protein Marker

**MW:** 36 kDa

**Purity:** >90%



OUR PRODUCTS ARE FOR RESEARCH USE ONLY. NOT FOR DIAGNOSTIC OR THERAPEUTIC USE.

To place your order, please contact us by Phone **1.858.202.1401** Fax **1.858.481.8694**  
 Or you can Email us at: [info@bpsbioscience.com](mailto:info@bpsbioscience.com)  
 Please visit our website at: [www.bpsbioscience.com](http://www.bpsbioscience.com)



6042 Cornerstone Court West, Suite B  
San Diego, CA 92121  
**Tel:** 1.858.202.1401  
**Fax:** 1.858.481.8694  
**Email:** [info@bpsbioscience.com](mailto:info@bpsbioscience.com)

OUR PRODUCTS ARE FOR RESEARCH USE ONLY. NOT FOR DIAGNOSTIC OR THERAPEUTIC USE.

To place your order, please contact us by Phone **1.858.202.1401** Fax **1.858.481.8694**  
Or you can Email us at: [info@bpsbioscience.com](mailto:info@bpsbioscience.com)  
Please visit our website at: [www.bpsbioscience.com](http://www.bpsbioscience.com)