



# SZABO SCANDIC

Part of Europa Biosite

## Produktinformation



Forschungsprodukte & Biochemikalien



Zellkultur & Verbrauchsmaterial



Diagnostik & molekulare Diagnostik



Laborgeräte & Service

Weitere Information auf den folgenden Seiten!  
See the following pages for more information!



### Lieferung & Zahlungsart

siehe unsere [Liefer- und Versandbedingungen](#)

### Zuschläge

- Mindermengenzuschlag
- Trockeneiszuschlag
- Gefahrgutzuschlag
- Expressversand

### SZABO-SCANDIC HandelsgmbH

Quellenstraße 110, A-1100 Wien

T. +43(0)1 489 3961-0

F. +43(0)1 489 3961-7

[mail@szabo-scandic.com](mailto:mail@szabo-scandic.com)

[www.szabo-scandic.com](http://www.szabo-scandic.com)

[linkedin.com/company/szaboscandic](https://www.linkedin.com/company/szaboscandic) 

## Data Sheet

### KRAS (G12R), His-Tag

Human, Recombinant, N-terminal His-tag  
**Catalog #:** 100841  
**Lot #:** 200810      **Conc.:** 2.40 mg/ml

**Description:** Human KRAS also known as C-K-RAS, CFC2, and K-RAS2A, GenBank Accession No. NM\_033360, a.a. 2-186, with G12R mutation and N-terminal His-tag, expressed in an *E. coli* expression system. MW=23 kDa.

**Formulated in:** 40 mM Tris-HCl, pH 8.0, 110 mM NaCl, 2.2 mM KCl, 0.04% Tween20, 20% glycerol, 3 mM DTT.

**Stability:** At least 6 months at -80°C. Avoid freeze/thaw cycles.

#### References:

1. Lito, P., *et al.*, *Science*. 2016 Feb;**351(6273)**:604-608.
2. Dogan, S., *et al.*, *Clinical Cancer Research*. 2012 Nov;**18(22)**:6169-6177.

---

### Quality Assurance

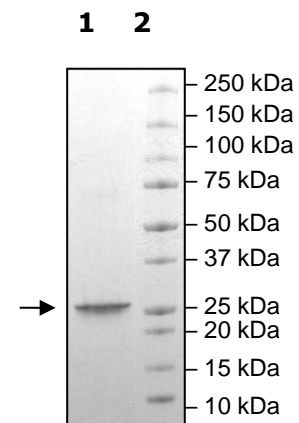
#### 6-20% SDS-PAGE Coomassie staining

**Lane 1:**  
KRas(G12R)

**Lane 2:**  
Protein Marker

**Purity:** >90%

**MW:** 23 kDa



OUR PRODUCTS ARE FOR RESEARCH USE ONLY. NOT FOR DIAGNOSTIC OR THERAPEUTIC USE.

To place your order, please contact us by Phone **1.858.202.1401** Fax **1.858.481.8694**  
Or you can Email us at: [info@bpsbioscience.com](mailto:info@bpsbioscience.com)  
Please visit our website at: [www.bpsbioscience.com](http://www.bpsbioscience.com)