



# SZABO SCANDIC

Part of Europa Biosite

## Produktinformation



Forschungsprodukte & Biochemikalien



Zellkultur & Verbrauchsmaterial



Diagnostik & molekulare Diagnostik



Laborgeräte & Service

Weitere Information auf den folgenden Seiten!  
See the following pages for more information!



### Lieferung & Zahlungsart

siehe unsere [Liefer- und Versandbedingungen](#)

### Zuschläge

- Mindermengenzuschlag
- Trockeneiszuschlag
- Gefahrgutzuschlag
- Expressversand

### SZABO-SCANDIC HandelsgmbH

Quellenstraße 110, A-1100 Wien

T. +43(0)1 489 3961-0

F. +43(0)1 489 3961-7

[mail@szabo-scandic.com](mailto:mail@szabo-scandic.com)

[www.szabo-scandic.com](http://www.szabo-scandic.com)

[linkedin.com/company/szaboscandic](https://www.linkedin.com/company/szaboscandic) 

## Data Sheet

### PLPro, His-tag (1541-1857) (SARS-CoV-1)

SARS-CoV-1, Recombinant, N-terminal His-tag  
**Catalog #:** 100903  
**Lot #:** 200925                      **Conc:** 3.85 mg/ml

**Formulated in:** 40 mM Tris-HCl pH 8.0, 110 mM NaCl, 2.2 mM KCl, 0.04% Tween-20, 3 mM DTT, 20% glycerol and 200 mM Imidazole.

**Stability:** At least 6 months at -80°C. *Avoid freeze/thaw cycles.*

**References:**

1. Ma-Lauer, Y., *et al.*, *PNAS*, 2016 Aug; **113(35)**: E5192-E5201.
2. Mukherjee, S. D., *et al.*, *Eu. PMC*. 2020 May; **DOI**: 10.21203/rs.3.rs-27134/v1.

**Description:** Severe acute respiratory Coronavirus 1 Papain-Like Protease (PLPro), also known as PLP and NSP3, GenBank Accession No. NP\_828862.2, a.a. 1541-1857 with N-terminal His-tag, expressed in an *E. coli* expression system, MW=37 kDa.

**Note:** Papain-like protease (PLPro), a.a. 819-2740, is a protein from SARS-CoV-1 which is processed/cleaved from the larger poly-protein 1ab, a.a. 1-7073. This product, a.a. 1541-1857, includes the protease domain of PLPro.

### **Quality Assurance**

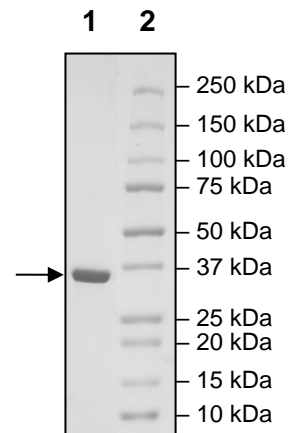
**4-20% SDS-PAGE**  
**Coomassie staining**

**Lane 1:**  
2 µg PLPro (1541-1857)

**Lane 2:**  
Protein Marker

**MW:** 37 kDa

**Purity:** ≥90%



OUR PRODUCTS ARE FOR RESEARCH USE ONLY. NOT FOR DIAGNOSTIC OR THERAPEUTIC USE.

To place your order, please contact us by Phone **1.858.202.1401** Fax **1.858.481.8694**  
Or you can Email us at: [info@bpsbioscience.com](mailto:info@bpsbioscience.com)  
Please visit our website at: [www.bpsbioscience.com](http://www.bpsbioscience.com)