



SZABO SCANDIC

Part of Europa Biosite

Produktinformation



Forschungsprodukte & Biochemikalien



Zellkultur & Verbrauchsmaterial



Diagnostik & molekulare Diagnostik



Laborgeräte & Service

Weitere Information auf den folgenden Seiten!
See the following pages for more information!



Lieferung & Zahlungsart

siehe unsere [Liefer- und Versandbedingungen](#)

Zuschläge

- Mindermengenzuschlag
- Trockeneiszuschlag
- Gefahrgutzuschlag
- Expressversand

SZABO-SCANDIC HandelsgmbH

Quellenstraße 110, A-1100 Wien

T. +43(0)1 489 3961-0

F. +43(0)1 489 3961-7

mail@szabo-scandic.com

www.szabo-scandic.com

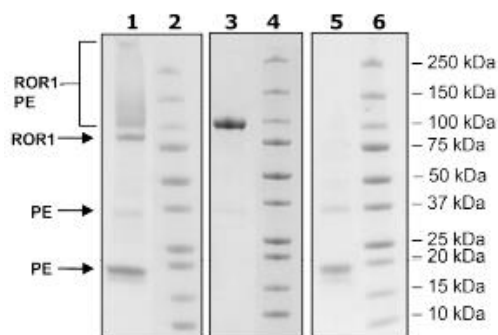
[linkedin.com/company/szaboscandic](https://www.linkedin.com/company/szaboscandic) 

Product Information

Construct:	ROR1 (24-403-Fc (IgG1)-Avi)-(PE)
Label:	R-Phycoerythrin (PE) is an oligomeric protein complex (270 kDa) from red algae that exhibits intensely bright red-orange fluorescence with high quantum yields. The complex consists of six heterodimers, α subunit (18 kDa) and β -subunit (20 kDa), and an additional γ -subunit (34 kDa). PE is covalently attached randomly through lysines on the target protein.
Concentration:	2.01 mg/ml
Species:	Human
Formulated In:	8 mM phosphate pH 7.4, 110 mM NaCl, 2.2 mM KCl, 20% glycerol
Expression System:	HEK293
Format:	Aqueous buffer solution
Stability:	At least 6 months at -80°C. Avoid freeze/thaw cycles. Protect from light.
Storage:	-80°C
Genbank Accession:	NM_005012
MW:	71 kDa + glycans + PE
Glycosylation:	This protein runs at a higher M.W. by SDS-PAGE due to glycosylation.
Purity:	≥90%

Quality Control Data

4-20% SDS-Page Coomassie Staining



Lane 1: 8 μ g ROR1-PE

Lane 3: 2 μ g ROR1

Lane 5: 4 μ g PE

Lanes 2, 4 & 6: Protein Marker