



# SZABO SCANDIC

Part of Europa Biosite

## Produktinformation



Forschungsprodukte & Biochemikalien



Zellkultur & Verbrauchsmaterial



Diagnostik & molekulare Diagnostik



Laborgeräte & Service

Weitere Information auf den folgenden Seiten!  
See the following pages for more information!



### Lieferung & Zahlungsart

siehe unsere [Liefer- und Versandbedingungen](#)

### Zuschläge

- Mindermengenzuschlag
- Trockeneiszuschlag
- Gefahrgutzuschlag
- Expressversand

### SZABO-SCANDIC HandelsgmbH

Quellenstraße 110, A-1100 Wien

T. +43(0)1 489 3961-0

F. +43(0)1 489 3961-7

[mail@szabo-scandic.com](mailto:mail@szabo-scandic.com)

[www.szabo-scandic.com](http://www.szabo-scandic.com)

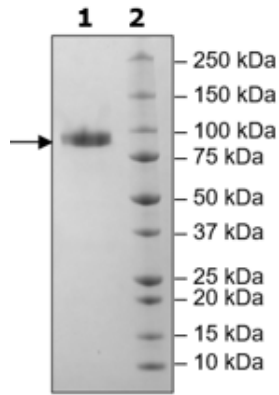
[linkedin.com/company/szaboscandic](https://www.linkedin.com/company/szaboscandic) 

## Product Information

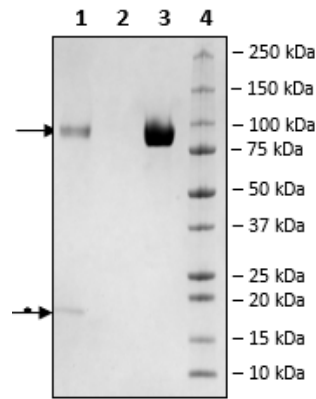
<b>Description:</b>	Recombinant human IL18R1 (interleukin 18 receptor 1), encompassing amino acids 22-329. The C-terminus is fused with the Fc fragment of a human IgG1, followed by an Avi-tag™. This protein was affinity purified. HiP™ indicates a high purity protein (≥90% pure) and less than 10% aggregation as measured by gel filtration.
<b>Background:</b>	IL18R1 (interleukin 18 receptor 1), also known as CD128a or IL18RA, is a member of the immunoglobulin superfamily. It binds specifically to IL-18, a pro-inflammatory cytokine, and can be found on CD8 <sup>+</sup> T cells. It is one of the two subunits of the IL-18 receptor, the other being IL18RB (also known as IL18RAP). IL18R1 is inducible and has low affinity per se for IL-18 but binding of IL-18 leads to the recruitment of the other subunit to form a high affinity complex and activate the NF-κB (nuclear factor kappa-light-chain enhancer of activated B cells) signaling pathway. Activation of the inflammasome leads to the cleavage of pro-IL-18 into its active form, linking the IL18/IL18R signaling axis to NLRP3 (NOD-, LRR-, pyrin domain containing protein 3) inflammasome and diseases such as CDK (chronic kidney disease). Overexpression of IL18R1 resulted in decrease of LUSC (lung squamous cell carcinoma) cell proliferation and migration. The role of this receptor and IL-18 in cancer and inflammation are still being uncovered and this understanding will open the door to new treatments.
<b>Species:</b>	Human
<b>Construct:</b>	IL18R1 (22-329-Fc(IgG1)-Avi)-(Biotin)
<b>Concentration:</b>	0.87 mg/ml
<b>Expression System:</b>	HEK293
<b>Purity:</b>	≥90%
<b>Format:</b>	Aqueous buffer solution.
<b>Formulated In:</b>	8 mM phosphate, pH 7.4, 110 mM NaCl, 2.2 mM KCl, and 20% glycerol
<b>MW:</b>	64 kDa + glycans
<b>Glycosylation:</b>	This protein runs at a higher MW by SDS-PAGE due to glycosylation.
<b>Aggregation</b>	<10%
<b>Genbank Accession:</b>	NM_003855
<b>Label:</b>	This protein is enzymatically biotinylated using Avi-Tag™ technology. Biotinylation is confirmed to be ≥90%.
<b>Stability:</b>	At least 6 months at -80°C.
<b>Storage:</b>	-80°C
<b>Instructions for Use:</b>	Thaw on ice and gently mix prior to use. DO NOT VORTEX. Perform a quick spin before opening. Aliquot into small volumes and flash freeze for long term storage. Avoid multiple freeze/thaw cycles.
<b>Applications:</b>	Useful for avidin pulldown assays.

## Quality Control Data

### 4-20% SDS-PAGE Coomassie Staining



### Biotin-Avidin Pulldown



1. Beads
2. Flow thru
3. Control
4. Standards

\* Avidin from beads.

### Gel Filtration Trace

