



SZABO SCANDIC

Part of Europa Biosite

Produktinformation



Forschungsprodukte & Biochemikalien



Zellkultur & Verbrauchsmaterial



Diagnostik & molekulare Diagnostik



Laborgeräte & Service

Weitere Information auf den folgenden Seiten!
See the following pages for more information!



Lieferung & Zahlungsart

siehe unsere [Liefer- und Versandbedingungen](#)

Zuschläge

- Mindermengenzuschlag
- Trockeneiszuschlag
- Gefahrgutzuschlag
- Expressversand

SZABO-SCANDIC HandelsgmbH

Quellenstraße 110, A-1100 Wien

T. +43(0)1 489 3961-0

F. +43(0)1 489 3961-7

mail@szabo-scandic.com

www.szabo-scandic.com

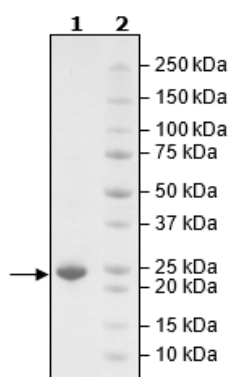
[linkedin.com/company/szaboscandic](https://www.linkedin.com/company/szaboscandic) 

Product Information

Description:	KRAS (G12D) His-Tag (BPS Bioscience #100623), is loaded with GDP. Unbound GDP was removed by spin column. Ready for use in the GDP/GTP exchange assay or as a negative control for KRAS-RAF interaction.
Construct:	KRAS (G12D) (His-TEV-2-186)-(GDP)
Mutation:	G12D
Concentration:	0.82 mg/ml
Species:	Human
Formulated In:	20 mM HEPES, pH 7.4, 150 mM NaCl, 1 mM DTT
Expression System:	<i>E. coli</i>
Format:	Aqueous buffer solution
Stability:	At least 6 months at -80°C. Avoid freeze/thaw cycles.
Storage:	-80°C
Genbank Accession:	NM_033360
MW:	23 kDa
Purity:	≥90%
Assay Conditions:	Assay was performed according to the KRAS (G12C) Coupled Nucleotide Exchange Assay Kit (BPS Bioscience #78004) with GDP loaded KRAS (G12C) (BPS Bioscience #100640) and GDP loaded KRAS (G12D) (BPS Bioscience #101312) titrated from 200 nM to 0 nM. Enzyme was incubated with SOS1; positive results show that SOS1 mediated exchange and subsequent RAS-Raf binding is successful.
Applications:	Useful for the study of enzyme kinetics, screening inhibitors, and selectivity profiling.

Quality Control Data

4-20% SDS-Page Coomassie Staining



KRAS (G12D) GDP-Loaded Activity

