



# SZABO SCANDIC

Part of Europa Biosite

## Produktinformation



Forschungsprodukte & Biochemikalien



Zellkultur & Verbrauchsmaterial



Diagnostik & molekulare Diagnostik



Laborgeräte & Service

Weitere Information auf den folgenden Seiten!  
See the following pages for more information!



### Lieferung & Zahlungsart

siehe unsere [Liefer- und Versandbedingungen](#)

### Zuschläge

- Mindermengenzuschlag
- Trockeneiszuschlag
- Gefahrgutzuschlag
- Expressversand

### SZABO-SCANDIC HandelsgmbH

Quellenstraße 110, A-1100 Wien

T. +43(0)1 489 3961-0

F. +43(0)1 489 3961-7

[mail@szabo-scandic.com](mailto:mail@szabo-scandic.com)

[www.szabo-scandic.com](http://www.szabo-scandic.com)

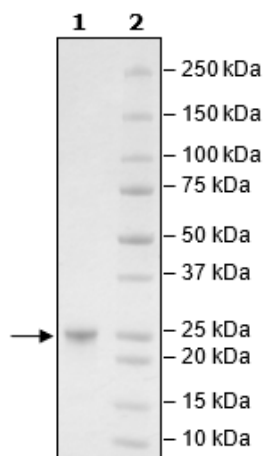
[linkedin.com/company/szaboscandic](https://www.linkedin.com/company/szaboscandic) 

## Product Information

<b>Construct:</b>	KRAS (G12D) (His-TEV-2-186)-(GppNHP)
<b>Mutation:</b>	G12D
<b>Concentration:</b>	1.64 mg/ml
<b>Species:</b>	Human
<b>Formulated In:</b>	20 mM HEPES, pH 7.4, 150 mM NaCl, and 1 mM DTT
<b>Expression System:</b>	<i>E. coli</i>
<b>Format:</b>	Aqueous buffer solution
<b>Stability:</b>	At least 6 months at -80°C. Avoid freeze/thaw cycles.
<b>Storage:</b>	-80°C
<b>Genbank Accession:</b>	NM_033360
<b>MW:</b>	23 kDa
<b>Purity:</b>	≥90%
<b>Assay Conditions:</b>	Assay was performed according to KRAS(G12C) Coupled Nucleotide Exchange Assay Kit (BPS Bioscience #78004) without SOS1/GTP mixture. KRAS (G12D), Isoform A, His-Tag, GDP-Loaded Recombinant (BPS Bioscience #101312) and GppNHP loaded KRAS (G12D) (BPS Bioscience #101481) were titrated at various concentrations.
<b>Applications:</b>	Useful for the study of enzyme kinetics, screening inhibitors, and selectivity profiling.

## Quality Control Data

4-20% SDS-Page Coomassie Staining



KRAS (G12D) Activity

