



# SZABO SCANDIC

Part of Europa Biosite

## Produktinformation



Forschungsprodukte & Biochemikalien



Zellkultur & Verbrauchsmaterial



Diagnostik & molekulare Diagnostik



Laborgeräte & Service

Weitere Information auf den folgenden Seiten!  
See the following pages for more information!



### Lieferung & Zahlungsart

siehe unsere [Liefer- und Versandbedingungen](#)

### Zuschläge

- Mindermengenzuschlag
- Trockeneiszuschlag
- Gefahrgutzuschlag
- Expressversand

### SZABO-SCANDIC HandelsgmbH

Quellenstraße 110, A-1100 Wien

T. +43(0)1 489 3961-0

F. +43(0)1 489 3961-7

[mail@szabo-scandic.com](mailto:mail@szabo-scandic.com)

[www.szabo-scandic.com](http://www.szabo-scandic.com)

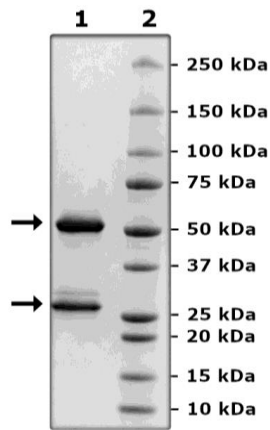
[linkedin.com/company/szaboscandic](https://www.linkedin.com/company/szaboscandic) 

## Product Information

|                              |  |
|------------------------------|--|
| <b>Description:</b>          | Recombinant monoclonal anti-CD25 (Basiliximab) which recognizes interleukin-2 receptor alpha subunit (IL-2RA). This affinity purified antibody has been tested for specific binding to purified human IL2RA protein (BPS Bioscience #101203) in a colorimetric ELISA binding assay.  |
| <b>Species</b>               | Human  |
| <b>Concentration:</b>        | 3.66 mg/ml   |
| <b>Expression System:</b>    | HEK293   |
| <b>Purity:</b>               | ≥90%   |
| <b>Format:</b>               | Aqueous buffer solution.   |
| <b>Formulated In:</b>        | 8 mM phosphate, pH 7.4, 110 mM NaCl, 2.2 mM KCl, and 20% glycerol  |
| <b>MW:</b>                   | Heavy Chain: 50 kDa; Light Chain: 23 kDa + glycans   |
| <b>Glycosylation:</b>        | This antibody runs at a higher MW by SDS-PAGE due to glycosylation.  |
| <b>Stability:</b>            | At least 12 months at -80°C.   |
| <b>Storage:</b>              | -80°C  |
| <b>Instructions for Use:</b> | Thaw on ice and gently mix prior to use. DO NOT VORTEX. Perform a quick spin before opening. Aliquot into small volumes and flash freeze for long term storage. Avoid multiple freeze/thaw cycles.   |
| <b>Assay Conditions:</b>     | Functional validation: The antibody was validated by measuring Anti-IL-2RA binding to IL2RA antigen in ELISA assay. The IL2RA protein (BPS Bioscience #101203) was coated onto a 96-well plate overnight at 4°C (50 µl/well at a concentration of 2 µg/ml in PBS). The plate was washed 3 times with Immuno Buffer 1 (BPS Bioscience #79311) and blocked using 100 µl of Blocking Buffer 2 (BPS Bioscience #79728) for 1 hour at room temperature. After removing the blocking buffer, 50 µl/well of purified Anti-IL-2RA Antibody (BPS Bioscience #101593), serially diluted in Blocking Buffer 2, was added for 30 minutes at room temperature. After 3 more washes, the plate was incubated with Goat Anti-Human IgG Fc (HRP) (Abcam #ab97225), washed, and incubated with the Colorimetric HRP substrate. The reaction was stopped, and absorbance was read at 450 nm. The Blank value was subtracted from all values. |
| <b>Applications:</b>         | Useful for the study of enzyme kinetics, screening inhibitors, and selectivity profiling.  |

## Quality Control Data

### 4-20% SDS-PAGE Coomassie Staining



### IL2RA:Anti-IL-2RA (CD25) Activity

