



# SZABO SCANDIC

Part of Europa Biosite

## Produktinformation



Forschungsprodukte & Biochemikalien



Zellkultur & Verbrauchsmaterial



Diagnostik & molekulare Diagnostik



Laborgeräte & Service

Weitere Information auf den folgenden Seiten!  
See the following pages for more information!



### Lieferung & Zahlungsart

siehe unsere [Liefer- und Versandbedingungen](#)

### Zuschläge

- Mindermengenzuschlag
- Trockeneiszuschlag
- Gefahrgutzuschlag
- Expressversand

### SZABO-SCANDIC HandelsgmbH

Quellenstraße 110, A-1100 Wien

T. +43(0)1 489 3961-0

F. +43(0)1 489 3961-7

[mail@szabo-scandic.com](mailto:mail@szabo-scandic.com)

[www.szabo-scandic.com](http://www.szabo-scandic.com)

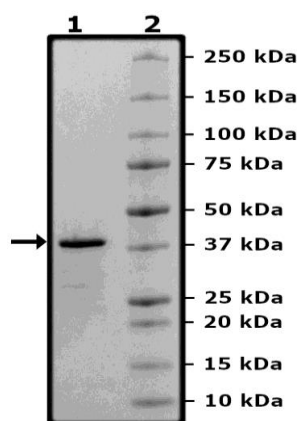
[linkedin.com/company/szaboscandic](https://www.linkedin.com/company/szaboscandic) 

## Product Information

<b>Description:</b>	Human Recombinant TRAF6 (TNF receptor associated factor 6), encompassing amino acids 51-159. This construct contains an N-terminal GST-tag followed by a PreScission Site to facilitate removal of the GST-tag.
<b>Species:</b>	Human
<b>Construct:</b>	TRAF6 (GST-Pre-51-159)
<b>Concentration:</b>	1.73 mg/ml
<b>Expression System:</b>	<i>E. coli</i>
<b>Purity:</b>	≥90%
<b>Format:</b>	Aqueous buffer solution.
<b>Formulated In:</b>	40 mM Tris-HCl, pH 8.0, 110 mM NaCl, 2.2 mM KCl, 20% glycerol, 3 mM DTT, and 2 mM Glutathione
<b>MW:</b>	39 kDa
<b>Genbank Accession:</b>	NM_145803
<b>Stability:</b>	At least 6 months at -80°C.
<b>Storage:</b>	-80°C
<b>Instructions for Use:</b>	Thaw on ice and gently mix prior to use. DO NOT VORTEX. Perform a quick spin before opening. Aliquot into small volumes and flash freeze for long term storage. Avoid multiple freeze/thaw cycles.
<b>Assay Conditions:</b>	TRAF6 activity was measured using varying amounts of TRAF6 and incubated with E1, E2, and ATP in the presence of an “intrachain Ubiquitin” mixture for 60 minutes at 30°C in a 20-μl reaction. After incubation, TR-FRET was detected (340=>620 nm, and 340=>665 nm). The TR-FRET is proportional to the auto polyubiquitination of TRAF6.
<b>Applications:</b>	Useful for the study of enzyme kinetics, screening inhibitors, and selectivity profiling.

## Quality Control Data

4-20% SDS-PAGE Coomassie Staining



TRAF6 Activity

