



# SZABO SCANDIC

Part of Europa Biosite

## Produktinformation



Forschungsprodukte & Biochemikalien



Zellkultur & Verbrauchsmaterial



Diagnostik & molekulare Diagnostik



Laborgeräte & Service

Weitere Information auf den folgenden Seiten!  
See the following pages for more information!



### Lieferung & Zahlungsart

siehe unsere [Liefer- und Versandbedingungen](#)

### Zuschläge

- Mindermengenzuschlag
- Trockeneiszuschlag
- Gefahrgutzuschlag
- Expressversand

### SZABO-SCANDIC HandelsgmbH

Quellenstraße 110, A-1100 Wien

T. +43(0)1 489 3961-0

F. +43(0)1 489 3961-7

[mail@szabo-scandic.com](mailto:mail@szabo-scandic.com)

[www.szabo-scandic.com](http://www.szabo-scandic.com)

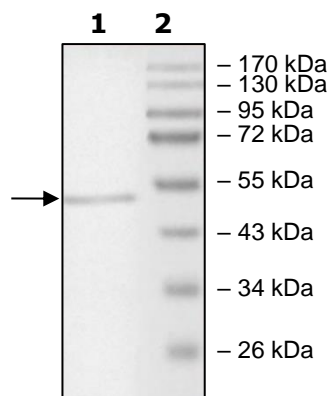
[linkedin.com/company/szaboscandic](https://www.linkedin.com/company/szaboscandic) 

## Product Information

<b>Description:</b>	Recombinant <i>Enterococcus italicus</i> EiCsm6 (type III-A CRISPR-associated CARF protein Csm6), full length. This construct contains a C-terminal His-tag. EiCsm6 is an ancillary ribonuclease associated with type III CRISPR-Cas system and contains a CRISPR-associated Rossmann fold domain.
<b>Species:</b>	<i>Enterococcus italicus</i>
<b>Construct:</b>	Csm6 (Full Length-His) ( <i>E. italicus</i> )
<b>Concentration:</b>	0.50 mg/ml
<b>Expression System:</b>	<i>E. coli</i>
<b>Purity:</b>	≥90%
<b>Format:</b>	Aqueous buffer solution.
<b>Formulated In:</b>	50 mM sodium phosphate, pH 7.5, 300 mM NaCl, 200 mM imidazole, 1 mM DTT, and 10% glycerol
<b>MW:</b>	52 kDa
<b>Genbank Accession:</b>	WP_007208953
<b>Stability:</b>	At least 6 months at -80°C.
<b>Storage:</b>	-80°C
<b>Instructions for Use:</b>	Thaw on ice and gently mix prior to use. DO NOT VORTEX. Perform a quick spin before opening. Aliquot into small volumes and flash freeze for long term storage. Avoid multiple freeze/thaw cycles.
<b>Assay Conditions:</b>	Variable amounts of EiCsm6 RNase activity were measured using fluorogenic substrate and read overtime using Tecan plate reader.
<b>Applications:</b>	Useful for the study of enzyme kinetics, screening inhibitors, and selectivity profiling.

## Quality Control Data

4-20% SDS-PAGE Coomassie Staining



EiCsm6 RNase Activity

