



SZABO SCANDIC

Part of Europa Biosite

Produktinformation



Forschungsprodukte & Biochemikalien



Zellkultur & Verbrauchsmaterial



Diagnostik & molekulare Diagnostik



Laborgeräte & Service

Weitere Information auf den folgenden Seiten!
See the following pages for more information!



Lieferung & Zahlungsart

siehe unsere [Liefer- und Versandbedingungen](#)

Zuschläge

- Mindermengenzuschlag
- Trockeneiszuschlag
- Gefahrgutzuschlag
- Expressversand

SZABO-SCANDIC HandelsgmbH

Quellenstraße 110, A-1100 Wien

T. +43(0)1 489 3961-0

F. +43(0)1 489 3961-7

mail@szabo-scandic.com

www.szabo-scandic.com

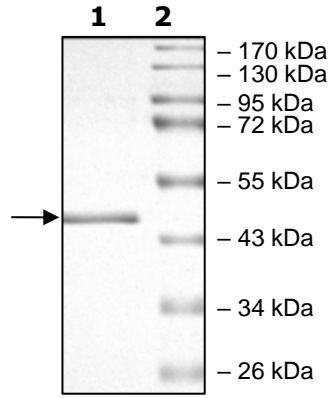
[linkedin.com/company/szaboscandic](https://www.linkedin.com/company/szaboscandic) 

Product Information

Description:	Recombinant human EGFR (epidermal growth factor receptor), encompassing amino acids (699-1022) length. This construct contains an N-terminal His-tag and mutation of interest (V948R). The recombinant protein was affinity purified and is kinase active.
Species:	Human
Construct:	EGFR (V948R) (His-669-1022)
Mutation:	V948R
Concentration:	0.10 mg/ml
Expression System:	Sf9
Purity:	90%
Format:	Aqueous buffer solution.
Formulated In:	50 mM Sodium Phosphate, pH 7.0, 300 mM NaCl, 150 mM Imidazole, 0.25 mM DTT, 25% glycerol
MW:	48 kDa
Genbank Accession:	NM_005228
Stability:	At least 6 months at -80°C.
Storage:	-80°C
Instructions for Use:	Thaw on ice and gently mix prior to use. DO NOT VORTEX. Perform a quick spin before opening. Aliquot into small volumes and flash freeze for long term storage. Avoid multiple freeze/thaw cycles.
Specific Activity:	38 pmol/min/μg
Assay Conditions:	EGFR (V948R) activity was measured by using Poly (4:1 Glu, Tyr) synthetic peptide substrate diluted in 25 mM Tris-HCl buffer (pH 7.5) to a final concentration of 1 mg/ml in the ADP Glo™ assay (Promega #V9101). Reaction was initiated by mixing increasing amounts of the EGFR (V948R) with 25 μM ATP in 40 mM Tris-HCl, pH 7.4, 20 mM MgCl ₂ , 0.1 mg/ml BSA prepared with 250 μM DTT and the 20 μg/ml substrate. After a 40-minute incubation at 37°C, the reaction was terminated by addition of the AMP-Glo™ Reagent followed by a subsequent 40-minute incubation at room temperature. Kinase Detection Reagent was then added and incubated for another 30 minutes. Detection of luminescence was measured using the Luminescence Module Protocol on GloMax®-Multi Microplate reader. The corrected activity (RLU) was calculated by removing the blank value for each sample divided by the (specific activity of ADP in RLU/pmol)*(Reaction time in min)*(Enzyme amount in μg or mg). The blank was determined from a “no kinase” sample by replacing the enzyme working solution with an equal volume of Kinase Dilution Buffer X (1X).
Applications:	Useful for the study of enzyme kinetics, screening inhibitors, and selectivity profiling.

Quality Control Data

4-20% SDS-PAGE Coomassie Staining



Specific Activity

