



SZABO SCANDIC

Part of Europa Biosite

Produktinformation



Forschungsprodukte & Biochemikalien



Zellkultur & Verbrauchsmaterial



Diagnostik & molekulare Diagnostik



Laborgeräte & Service

Weitere Information auf den folgenden Seiten!
See the following pages for more information!



Lieferung & Zahlungsart

siehe unsere [Liefer- und Versandbedingungen](#)

Zuschläge

- Mindermengenzuschlag
- Trockeneiszuschlag
- Gefahrgutzuschlag
- Expressversand

SZABO-SCANDIC HandelsgmbH

Quellenstraße 110, A-1100 Wien

T. +43(0)1 489 3961-0

F. +43(0)1 489 3961-7

mail@szabo-scandic.com

www.szabo-scandic.com

[linkedin.com/company/szaboscandic](https://www.linkedin.com/company/szaboscandic) 

3CL Protease (T21I, E166V) (SARS-CoV-2) Recombinant

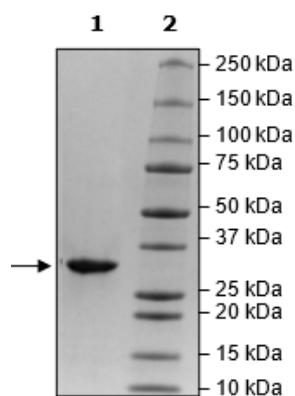
Catalog: 101671
Lot: 230201

Product Information

| | |
|------------------------------|--|
| Description: | Recombinant SARS-CoV-2 3C-like Protease, full length, encompassing amino acids 1-306(end). This construct does not contain a tag. The recombinant protein contains the mutations of interests (T21I) and (E166V) and is affinity purified. |
| Species: | SARS-CoV-2 |
| Construct: | 3CL Protease (T21I, E166V) (1-306(end)) (SARS-CoV-2) |
| Mutation: | T21I, E166V |
| Concentration: | 0.98 mg/ml |
| Expression System: | <i>E. coli</i> |
| Purity: | ≥90% |
| Format: | Aqueous buffer solution. |
| Formulated In: | 40 mM Tris-HCl, pH 8.0, 110 mM NaCl, 2.2 mM KCl, 20% glycerol, and 3 mM DTT |
| MW: | 34 kDa |
| Genbank Accession: | YP_009725301 |
| Stability: | At least 6 months at -80°C. |
| Storage: | -80°C |
| Instructions for Use: | Thaw on ice and gently mix prior to use. DO NOT VORTEX. Perform a quick spin before opening. Aliquot into small volumes and flash freeze for long term storage. Avoid multiple freeze/thaw cycles. |
| Assay Conditions: | Assay was run according to 3CL Protease (T21I, E166V) (SARS-CoV-2) Assay Kit (BPS Bioscience #78835) with various amounts of 3CL Protease (T21I, E166V). |
| Applications: | Useful for the study of enzyme kinetics, screening inhibitors, and selectivity profiling. |

Quality Control Data

4-20% SDS-PAGE Coomassie Staining



3CL Protease (T21I, E166V)

