



# SZABO SCANDIC

Part of Europa Biosite

## Produktinformation



Forschungsprodukte & Biochemikalien



Zellkultur & Verbrauchsmaterial



Diagnostik & molekulare Diagnostik



Laborgeräte & Service

Weitere Information auf den folgenden Seiten!  
See the following pages for more information!



### Lieferung & Zahlungsart

siehe unsere [Liefer- und Versandbedingungen](#)

### Zuschläge

- Mindermengenzuschlag
- Trockeneiszuschlag
- Gefahrgutzuschlag
- Expressversand

### SZABO-SCANDIC HandelsgmbH

Quellenstraße 110, A-1100 Wien

T. +43(0)1 489 3961-0

F. +43(0)1 489 3961-7

[mail@szabo-scandic.com](mailto:mail@szabo-scandic.com)

[www.szabo-scandic.com](http://www.szabo-scandic.com)

[linkedin.com/company/szaboscandic](https://www.linkedin.com/company/szaboscandic) 

# 3CL Protease (T21I, A173V, T304I), (SARS-CoV-2) Recombinant

Catalog: 101679

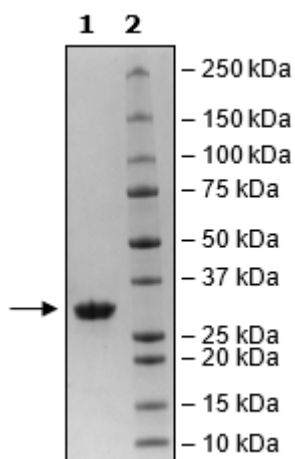
Lot: 230131

## Product Information

<b>Description:</b>	Recombinant SARS-CoV-2 3C-like Protease, full length, encompassing amino acids 1-306(end). This construct does not contain a tag. The recombinant protein contains the mutations of interests (T21I), (A173V) and (T304I) and is affinity purified.
<b>Species:</b>	SARS-CoV-2
<b>Construct:</b>	3CL Protease (T21I, A173V, T304I) (1-306(end)) (SARS-CoV-2)
<b>Mutation:</b>	T21I, A173V, T304I
<b>Concentration:</b>	2.23 mg/ml
<b>Expression System:</b>	<i>E. coli</i>
<b>Purity:</b>	≥90%
<b>Format:</b>	Aqueous buffer solution.
<b>Formulated In:</b>	40 mM Tris-HCl, pH 8.0, 110 mM NaCl, 2.2 mM KCl, 20% glycerol, and 3 mM DTT
<b>MW:</b>	34 kDa
<b>Genbank Accession:</b>	YP_009725301
<b>Stability:</b>	At least 6 months at -80°C.
<b>Storage:</b>	-80°C
<b>Instructions for Use:</b>	Thaw on ice and gently mix prior to use. DO NOT VORTEX. Perform a quick spin before opening. Aliquot into small volumes and flash freeze for long term storage. Avoid multiple freeze/thaw cycles.
<b>Assay Conditions:</b>	Assay was run according to 3CL Protease (T21I, A173V, T304I) (SARS-CoV-2) Assay Kit (BPS Bioscience #78836) with various amounts of 3CL Protease (T21I, A173V, T304I).
<b>Applications:</b>	Useful for the study of enzyme kinetics, screening inhibitors, and selectivity profiling.

## Quality Control Data

4-20% SDS-PAGE Coomassie Staining



3CL Protease (T21I, A173V, T304I) Activity

