



SZABO SCANDIC

Part of Europa Biosite

Produktinformation



Forschungsprodukte & Biochemikalien



Zellkultur & Verbrauchsmaterial



Diagnostik & molekulare Diagnostik



Laborgeräte & Service

Weitere Information auf den folgenden Seiten!
See the following pages for more information!



Lieferung & Zahlungsart

siehe unsere [Liefer- und Versandbedingungen](#)

Zuschläge

- Mindermengenzuschlag
- Trockeneiszuschlag
- Gefahrgutzuschlag
- Expressversand

SZABO-SCANDIC HandelsgmbH

Quellenstraße 110, A-1100 Wien

T. +43(0)1 489 3961-0

F. +43(0)1 489 3961-7

mail@szabo-scandic.com

www.szabo-scandic.com

[linkedin.com/company/szaboscandic](https://www.linkedin.com/company/szaboscandic) 

3CL Protease (T21I, T304I) (SARS-CoV-2) Recombinant

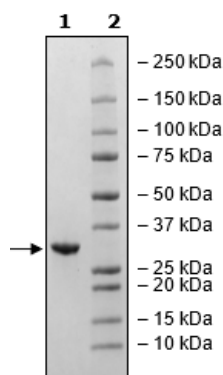
Catalog: 101685
Lot: 230209

Product Information

Description:	Recombinant SARS-CoV-2 3C-like Protease, full length, encompassing amino acids 1-306(end). This construct does not contain a tag. The recombinant protein contains the mutations of interests (T21I) and (T304I) and is affinity purified.
Species:	SARS-CoV-2
Construct:	3CL Protease (T21I, T304I) (1-306(end)) (SARS-CoV-2)
Mutation:	T21I, T304I
Concentration:	0.32 mg/ml
Expression System:	<i>E. coli</i>
Purity:	≥90%
Format:	Aqueous buffer solution.
Formulated In:	40 mM Tris-HCl, pH 8.0, 110 mM NaCl, 2.2 mM KCl, 20% glycerol, and 3 mM DTT
MW:	34 kDa
Genbank Accession:	YP_009725301
Stability:	At least 6 months at -80°C.
Storage:	-80°C
Instructions for Use:	Thaw on ice and gently mix prior to use. DO NOT VORTEX. Perform a quick spin before opening. Aliquot into small volumes and flash freeze for long term storage. Avoid multiple freeze/thaw cycles.
Assay Conditions:	Assay run according to 3CL Protease (T21I, T304I) (SARS-CoV-2) Assay Kit (BPS Bioscience #78838) with various amounts of 3CL Protease (T21I, T304I).
Applications:	Useful for the study of enzyme kinetics, screening inhibitors, and selectivity profiling.

Quality Control Data

4-20% SDS-PAGE Coomassie Staining



3CL Protease (T21I, T304I) Activity

