



# SZABO SCANDIC

Part of Europa Biosite

## Produktinformation



Forschungsprodukte & Biochemikalien



Zellkultur & Verbrauchsmaterial



Diagnostik & molekulare Diagnostik



Laborgeräte & Service

Weitere Information auf den folgenden Seiten!  
See the following pages for more information!



### Lieferung & Zahlungsart

siehe unsere [Liefer- und Versandbedingungen](#)

### Zuschläge

- Mindermengenzuschlag
- Trockeneiszuschlag
- Gefahrgutzuschlag
- Expressversand

### SZABO-SCANDIC HandelsgmbH

Quellenstraße 110, A-1100 Wien

T. +43(0)1 489 3961-0

F. +43(0)1 489 3961-7

[mail@szabo-scandic.com](mailto:mail@szabo-scandic.com)

[www.szabo-scandic.com](http://www.szabo-scandic.com)

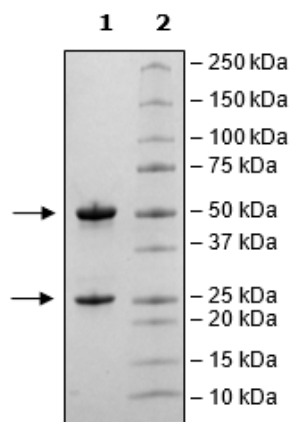
[linkedin.com/company/szaboscandic](https://www.linkedin.com/company/szaboscandic) 

## Product Information

<b>Description:</b>	This anti-TL1A T (TNF-like ligand 1A) antibody is a purified, recombinant human monoclonal antibody which recognizes the human TL1A protein. TL1A is also known as vascular endothelial growth inhibitor, VEGI and TNFSF15 (Tumor Necrosis Factor Super Family 15).
<b>Background:</b>	TL1A is involved in immune regulation by binding to two receptors of the TNF (Tumor Necrosis Factor) family present in T and NK cells: DR3 and DcR3. Soluble TL1A induces CD4 <sup>+</sup> T cell proliferation and cytokine secretion. TL1A bound to DR3 can switch immune response towards type 1 T-helper cells. Dysregulation can lead to pathologies such as inflammatory bowel disease (IBD) and other auto-immune diseases. TL1A is thus an attractive target for auto-immune disease treatment.
<b>Species:</b>	Human
<b>Isotype:</b>	IgG1
<b>Clonality:</b>	Monoclonal
<b>Concentration:</b>	2.62 mg/ml
<b>Expression System:</b>	HEK293
<b>Purity:</b>	≥90%
<b>Purification:</b>	Protein A affinity chromatography from HEK293 supernatants.
<b>Format:</b>	Aqueous buffer solution.
<b>Formulated In:</b>	8 mM phosphate, pH 7.4, 110 mM NaCl, 2.2 mM KCl, and 20% glycerol
<b>MW:</b>	Heavy Chain: 49 kDa + glycans; Light Chain: 23 kDa
<b>Glycosylation:</b>	This antibody runs at a higher MW by SDS-PAGE due to glycosylation.
<b>Stability:</b>	At least 6 months at -80°C.
<b>Storage:</b>	-80°C
<b>Instructions for Use:</b>	Thaw on ice and gently mix prior to use. DO NOT VORTEX. Perform a quick spin before opening. Aliquot into small volumes and flash freeze for long term storage. Avoid multiple freeze/thaw cycles.
<b>Assay Conditions:</b>	Dose response of Anti-TL1A antibody. TL1A-Responsive Luciferase Reporter Jurkat cells (BPS Bioscience #78811) were plated according to the cell line protocol. A serial dilution of anti-TL1A antibody was prepared and pre-incubated with 1 µg/ml human TL1A for 1 hour. After the 1-hour incubation, the anti-TL1A antibody and TL1A mixture was added to the cells. The plate was incubated at 37°C with 5% CO <sub>2</sub> for 5 hours before being assayed using the One-Step™ Luciferase Detection Reagent (BPS Bioscience #60690). Data is shown as the percent luminescence of NF-κB luciferase reporter expression, in which the absence of antibody is defined as 100%.
<b>Applications:</b>	Useful for studying the neutralization of TL1A in ELISA and in cellular assays.

## Quality Control Data

### 4-20% SDS-PAGE Coomassie Staining



### Anti-TL1A Neutralizing Assay

