



SZABO SCANDIC

Part of Europa Biosite

Produktinformation



Forschungsprodukte & Biochemikalien



Zellkultur & Verbrauchsmaterial



Diagnostik & molekulare Diagnostik



Laborgeräte & Service

Weitere Information auf den folgenden Seiten!
See the following pages for more information!



Lieferung & Zahlungsart

siehe unsere [Liefer- und Versandbedingungen](#)

Zuschläge

- Mindermengenzuschlag
- Trockeneiszuschlag
- Gefahrgutzuschlag
- Expressversand

SZABO-SCANDIC HandelsgmbH

Quellenstraße 110, A-1100 Wien

T. +43(0)1 489 3961-0

F. +43(0)1 489 3961-7

mail@szabo-scandic.com

www.szabo-scandic.com

[linkedin.com/company/szaboscandic](https://www.linkedin.com/company/szaboscandic) 

Data Sheet

ACE2, His-Tag

Human, Recombinant, C-terminal His-tag

Catalog #: 11003

Lot #: 131001

Conc: 0.14 mg/ml

Formulated in: 40 mM Tris pH 8.0, 110 mM NaCl, 2.2mM KCl, 200 mM Imidazole and 20% glycerol.

Stability: At least 6 months at -80°C. Avoid freeze/thaw cycles.

References:

1. Oudit, G.Y., *et al.*, *Trends in Cardio. Med.* 2003 Apr;**13(3)**:93-101.
2. Donoghue, M., *et al.*, *Circulation Research.* 2002 Sep;**87**:e1-e9

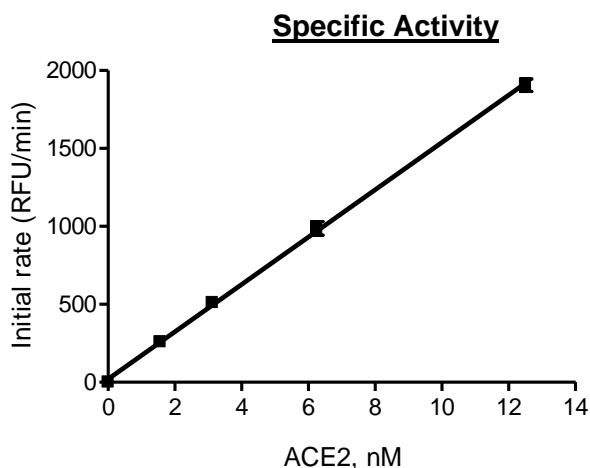
Description: Human Angiotensin converting enzyme 2 (ACE2) also known ACEH, GenBank Accession No. NP_068576.1, a.a. 18-740, with a C-terminal His-tag, expressed in a HEK293 expression system. MW=85 kDa.

Assay Conditions: ACE2 exopeptidase activity was measured in a 50 µl reaction containing L-Phe quantification reagents in 50 mM Tris pH8.0, as previously described. Fluorescence intensity was kinetically recorded at 555 nm excitation/585 nm emission, and net initial rates, measured in RFU/min, were used to plot the results.

Applications:

As an exopeptidase, ACE2 is useful for the study of enzyme kinetics and to screen for inhibitors. As a cell receptor for coronaviruses infection, including 2019-nCoV, ACE2 is useful for the study of protein-protein interactions.

Quality Assurance



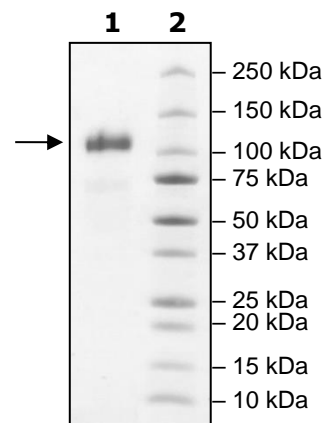
**4-20% SDS-PAGE
Coomassie staining**

Lane 1:
2 µg ACE2

Lane 2:
Protein Marker

MW: 85 kDa

Purity: ≥90%



OUR PRODUCTS ARE FOR RESEARCH USE ONLY. NOT FOR DIAGNOSTIC OR THERAPEUTIC USE.

To place your order, please contact us by Phone **1.858.202.1401** Fax **1.858.481.8694**

Or you can Email us at: info@bpsbioscience.com

Please visit our website at: www.bpsbioscience.com

ACE2:2019-CoV Spike Protein Binding

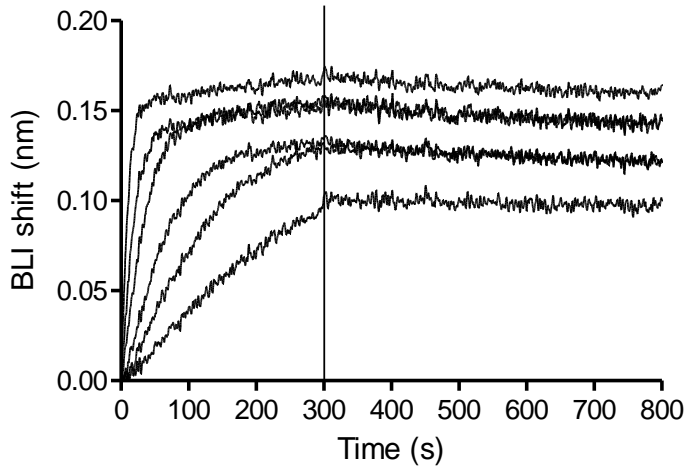


Figure 1. 2019-nCoV Spike Protein/Human ACE2, His-tag BLI. Loaded Human ACE-2 His-tag (BPS Bioscience, 11003) on Anti-His biosensor can bind 2019-nCoV Spike Protein (RBD, mFc Tag) (Sino, 40592-V05H) with an affinity constant of 2 nM as determined in BLI assay (Life Probe Gator).

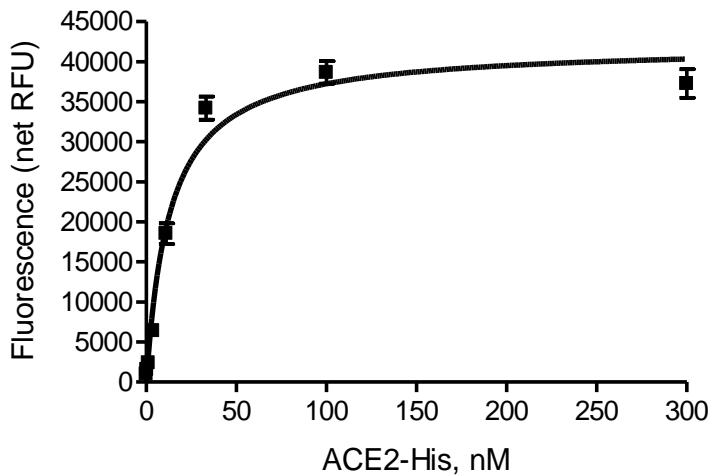


Figure 2. 2019-nCoV Spike Protein/Human ACE2, His-tag DELFLIA. Immobilized 2019-nCoV Spike Protein (RBD, mFc Tag) (Sino, 40592-V05H) at 4 µg/ml (200 µl/well) can bind human ACE2, His-tag (BPS Bioscience, 11003) with a linear range of 1-50 nM. Bound human ACE2, His-tag was quantified with MAAb Anti 6HIS-Tb cryptate (Cisbio, 61HISTLB), measuring fluorescence intensity at 340 nm excitation/550 nm emission.

OUR PRODUCTS ARE FOR RESEARCH USE ONLY. NOT FOR DIAGNOSTIC OR THERAPEUTIC USE.

To place your order, please contact us by Phone **1.858.202.1401** Fax **1.858.481.8694**
Or you can Email us at: info@bpsbioscience.com
Please visit our website at: www.bpsbioscience.com