



SZABO SCANDIC

Part of Europa Biosite

Produktinformation



Forschungsprodukte & Biochemikalien



Zellkultur & Verbrauchsmaterial



Diagnostik & molekulare Diagnostik



Laborgeräte & Service

Weitere Information auf den folgenden Seiten!
See the following pages for more information!



Lieferung & Zahlungsart

siehe unsere [Liefer- und Versandbedingungen](#)

Zuschläge

- Mindermengenzuschlag
- Trockeneiszuschlag
- Gefahrgutzuschlag
- Expressversand

SZABO-SCANDIC HandelsgmbH

Quellenstraße 110, A-1100 Wien

T. +43(0)1 489 3961-0

F. +43(0)1 489 3961-7

mail@szabo-scandic.com

www.szabo-scandic.com

[linkedin.com/company/szaboscandic](https://www.linkedin.com/company/szaboscandic) 

Data Sheet

Anti-PD-L1-Fab Avi-Tag, Biotin-Labeled

Recombinant, human Monoclonal
 Anti-PD-L1, Biotin labeled

Catalog #: 11032

Lot #: 160218

Conc.: 1.64 mg/ml

Host Species | Isotype:

Human | Human IgG1

Formulated in: 8 mM phosphate, 110 mM NaCl, 2.2 mM KCl, pH 7.4, and 20% glycerol.

Stability: Stable for at least 12 months at -80°C. *Protect from light. Avoid freeze/thaw cycles.*

References:

1. Vernon-Wilson, E.F. et al., Eur. J. Immunol. 2000; 30(8): 2130-2137.
2. Majeti, R. et al., Cell. 2009; 138(2): 286- 299.

Description: PD-L1 Neutralizing Antibody FAB fragment, recombinant humanized monoclonal, recognizing the extracellular domain of human PD-L1 and blocking the binding of PD-L1 to PD-1. This antibody FAB has been shown to cross-react with mouse PD-L1. No other species have been tested.

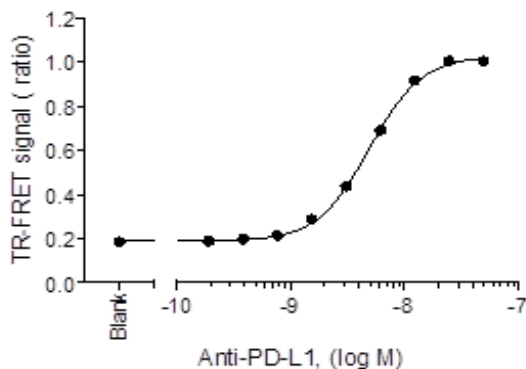
Purification: Protein A affinity chromatography from HEK293 supernatants.

Assay Conditions: Anti-PD-L1-Biotin (BPS Bioscience #11032) was titrated from 0 to 50 nM with a 2-fold dilution series in presence of 100 nM PD-L1-FLAG (BPS Bioscience #71183) and incubated for 1 hour at RT. Binding was detected with Anti-FLAG-Eu and Streptavidin-APC.

Application: Useful as an antagonist to block PD-L1 signaling and binding to PD-1 in biochemical assays.

Quality Assurance

Anti-PD-L1:PD-L1 TR FRET Binding Assay

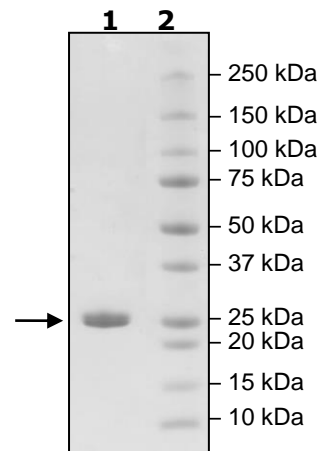


**4-20% SDS-PAGE
 Coomassie staining**

Lane 1:
 4µg Anti-PD-L1-Fab
Lane 2:
 Protein Marker

MW:
 Heavy chain~25 kDa
 Light chain~25 kDa

Purity: ≥90%



OUR PRODUCTS ARE FOR RESEARCH USE ONLY. NOT FOR DIAGNOSTIC OR THERAPEUTIC USE.

To place your order, please contact us by Phone **1.858.202.1401** Fax **1.858.481.8694**

Or you can Email us at: info@bpsbioscience.com

Please visit our website at: www.bpsbioscience.com