



SZABO SCANDIC

Part of Europa Biosite

Produktinformation



Forschungsprodukte & Biochemikalien



Zellkultur & Verbrauchsmaterial



Diagnostik & molekulare Diagnostik



Laborgeräte & Service

Weitere Information auf den folgenden Seiten!
See the following pages for more information!



Lieferung & Zahlungsart

siehe unsere [Liefer- und Versandbedingungen](#)

Zuschläge

- Mindermengenzuschlag
- Trockeneiszuschlag
- Gefahrgutzuschlag
- Expressversand

SZABO-SCANDIC HandelsgmbH

Quellenstraße 110, A-1100 Wien

T. +43(0)1 489 3961-0

F. +43(0)1 489 3961-7

mail@szabo-scandic.com

www.szabo-scandic.com

[linkedin.com/company/szaboscandic](https://www.linkedin.com/company/szaboscandic) 

Data Sheet

LpxC (E. coli)

E. coli, Recombinant

Catalog #: 11128**Lot #:** 150130-GA2 **Conc.:** 0.74 mg/ml**Formulated in:** 40mM HEPES pH 7.0, 120 mM NaCl, 20% glycerol and 2mM DTT.**Stability:** At least 6 months at -80°C . Avoid freeze/thaw cycles. Protein may be diluted to $\geq 100 \mu\text{g/ml}$ in PBS + glycerol and stored at -80°C .

References:

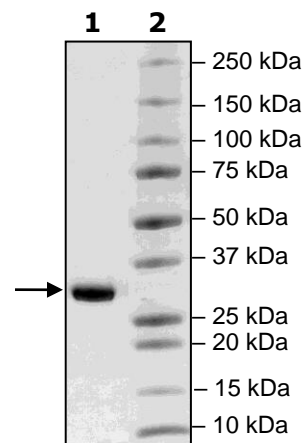
1. Clements, J.M, *et al.*, American Society for Microbiology. 2002. Jun 46;**6**: 1739-1799.
2. Whittington, D, *et al.*, PNAS. 2003. July 100;**14**: 8146-8150.

Description:

E. coli LpxC, also known as UDP-3-O-N-acetylglucosamine deacetylase, GenBank Accession No. NP_253096.1, a.a. 1-305 (end), expressed in an *E.coli* expression system. MW = 34 kDa.

Quality Assurance

4-20% SDS-PAGE Coomassie staining

Lane 1:
2 μg LpxC**Lane 2:**
Protein Marker**MW:** 34 kDa
Purity: $\geq 90\%$ 

OUR PRODUCTS ARE FOR RESEARCH USE ONLY. NOT FOR DIAGNOSTIC OR THERAPEUTIC USE.

To place your order, please contact us by Phone **1.858.829.3082** Fax **1.858.481.8694**
Or you can Email us at: info@bpsbioscience.com
Please visit our website at: www.bpsbioscience.com