



# SZABO SCANDIC

Part of Europa Biosite

## Produktinformation



Forschungsprodukte & Biochemikalien



Zellkultur & Verbrauchsmaterial



Diagnostik & molekulare Diagnostik



Laborgeräte & Service

Weitere Information auf den folgenden Seiten!  
See the following pages for more information!



### Lieferung & Zahlungsart

siehe unsere [Liefer- und Versandbedingungen](#)

### Zuschläge

- Mindermengenzuschlag
- Trockeneiszuschlag
- Gefahrgutzuschlag
- Expressversand

### SZABO-SCANDIC HandelsgmbH

Quellenstraße 110, A-1100 Wien

T. +43(0)1 489 3961-0

F. +43(0)1 489 3961-7

[mail@szabo-scandic.com](mailto:mail@szabo-scandic.com)

[www.szabo-scandic.com](http://www.szabo-scandic.com)

[linkedin.com/company/szaboscandic](https://www.linkedin.com/company/szaboscandic) 

## Data Sheet

### KRAS, His-Tag

Human, Recombinant, N-terminal His-tag  
**Catalog #:** 11308  
**Lot #:** 141204-1      **Conc.:** 0.75 mg/ml

**Formulated in:** 40 mM Tris-HCl, pH 8.0, 110 mM NaCl, 2.2 mM KCl, 0.04% Tween20, 20% glycerol, 3 mM DTT, 105 mM Imidazole

**Stability:** At least 6 months at -70°C. Avoid freeze/thaw cycles.

**References:**

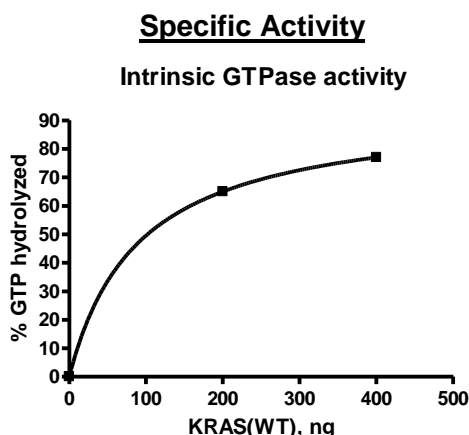
1. Roock, W., *et al.*, *Annals of Oncology*. 2008;**19(3)**:508-515.
2. Finocchiaro, G., *et al.*, *Journal of Clinical Oncology*. 2007 June; **25(18)**:4021.

**Description:** Human KRAS also known as C-K-RAS, CFC2, and K-RAS2A, GenBank Accession No. NM\_033360, a.a. 2-185, with N-terminal His-tag, and expressed in a Baculovirus infected Sf9 cell expression system. MW=22 kDa.

**Assay Conditions:** Intrinsic GTPase reaction of KRAS was conducted at room temperature for 60 min using GTPase-Glo (Promega) reagents with 1 μM GTP.

**Applications:** Useful for the study of enzyme kinetics, screening inhibitors, and selectivity profiling.

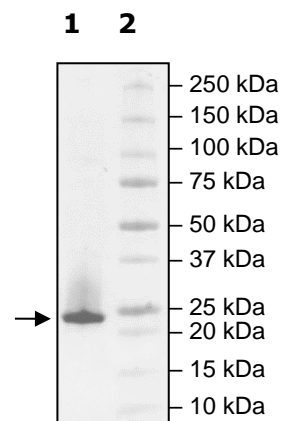
### Quality Assurance



**6-20% SDS-PAGE**  
**Coomassie staining**

**Lane 1:**  
**KRAS**  
 (2.4 ug loaded)  
**Lane 2:**  
 Protein Marker

**Purity:** ≥72%  
**MW:** 22 kDa



OUR PRODUCTS ARE FOR RESEARCH USE ONLY. NOT FOR DIAGNOSTIC OR THERAPEUTIC USE.

To place your order, please contact us by Phone **1.858.202.1401** Fax **1.858.481.8694**  
 Or you can Email us at: [info@bpsbioscience.com](mailto:info@bpsbioscience.com)  
 Please visit our website at: [www.bpsbioscience.com](http://www.bpsbioscience.com)