



SZABO SCANDIC

Part of Europa Biosite

Produktinformation



Forschungsprodukte & Biochemikalien



Zellkultur & Verbrauchsmaterial



Diagnostik & molekulare Diagnostik



Laborgeräte & Service

Weitere Information auf den folgenden Seiten!
See the following pages for more information!



Lieferung & Zahlungsart

siehe unsere [Liefer- und Versandbedingungen](#)

Zuschläge

- Mindermengenzuschlag
- Trockeneiszuschlag
- Gefahrgutzuschlag
- Expressversand

SZABO-SCANDIC HandelsgmbH

Quellenstraße 110, A-1100 Wien

T. +43(0)1 489 3961-0

F. +43(0)1 489 3961-7

mail@szabo-scandic.com

www.szabo-scandic.com

[linkedin.com/company/szaboscandic](https://www.linkedin.com/company/szaboscandic) 

Data Sheet

DNA Polymerase beta

Human, recombinant, N-terminal His-tag
Catalog #: 21000
Lot #: 130509 Conc.: 0.86 mg/ml

Formulated in: 40 mM Tris-HCl, pH 8.0,
110 mM NaCl, 2.2 mM KCl, 250 mM
imidazole, 0.04% Tween-20, and 20%
glycerol.

Stability: >6 months at -80°C

References:

1. Yamtich, J., *et al.*, *PLoS Genet.* 2012;**8(11)**: E1003052.
2. Wang, K., *et al.*, *Cancer Res.* 1992;**52(17)**: 4824-4827.

Description:

Human DNA polymerase beta, also known as Pol beta and POLB (GenBank Accession No. NM_002690), amino-acids 2-335 (end), with N-terminal His-tag, MW=39 kDa, expressed in an *E. coli* cell expression system.

Application:

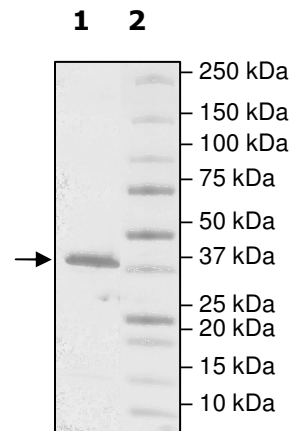
Useful for DNA synthesis and DNA repair, as an antigen for Western blotting, and for inhibitor screening.

Quality Assurance

**4-20% SDS-PAGE
Coomassie staining**

Lane 1:
2.6 µg POLB
Lane 2:
Protein Marker

Purity: ≥84%
MW: 39 kDa



OUR PRODUCTS ARE FOR RESEARCH USE ONLY. NOT FOR DIAGNOSTIC OR THERAPEUTIC USE.

To place your order, please contact us by Phone **1.858.829.3082** Fax **1.858.481.8694**
Or you can Email us at: info@bpsbioscience.com
Please visit our website at: www.bpsbioscience.com



6044 Cornerstone Court West, Suite E
San Diego, CA 92121
Tel: 1.858.829.3082
Fax: 1.858.481.8694
Email: info@bpsbioscience.com

Sequence:

MHHHHHHHSKRKAPQETLNGGITDMLTELANFEKNVSQAIHKYNAYRKAASVIKYPH
KIKSGAEAKKLPVGTGKIAEKIDEFLATGKLRKLEKIRQDDTSSSINFLTRVSGIGPSAA
RKFDVDEGIKTLEDLRKNEDKLNHHQRIGLKYFGDFEKRIPREEMLQMQDIVLNEVKKV
DSEYIATVCGSFRRGAESSGDMDVLLTHPSFTSESTKQPKLLHQVVEQLQKVHFITDT
LSKGETKFMGVCQLPSKNDEKEYPHRRIDIRLIPKDQYYCGVLYFTGSDIFNKNMRAH
ALEKGFTINEYTIRPLGVTGVAGEPLPVDSEKDIFDYIQWKYREPKDRSE

OUR PRODUCTS ARE FOR RESEARCH USE ONLY. NOT FOR DIAGNOSTIC OR THERAPEUTIC USE.

To place your order, please contact us by Phone **1.858.829.3082** Fax **1.858.481.8694**
Or you can Email us at: info@bpsbioscience.com
Please visit our website at: www.bpsbioscience.com