



# SZABO SCANDIC

Part of Europa Biosite

## Produktinformation



Forschungsprodukte & Biochemikalien



Zellkultur & Verbrauchsmaterial



Diagnostik & molekulare Diagnostik



Laborgeräte & Service

Weitere Information auf den folgenden Seiten!  
See the following pages for more information!



### Lieferung & Zahlungsart

siehe unsere [Liefer- und Versandbedingungen](#)

### Zuschläge

- Mindermengenzuschlag
- Trockeneiszuschlag
- Gefahrgutzuschlag
- Expressversand

### SZABO-SCANDIC HandelsgmbH

Quellenstraße 110, A-1100 Wien

T. +43(0)1 489 3961-0

F. +43(0)1 489 3961-7

[mail@szabo-scandic.com](mailto:mail@szabo-scandic.com)

[www.szabo-scandic.com](http://www.szabo-scandic.com)

[linkedin.com/company/szaboscandic](https://www.linkedin.com/company/szaboscandic) 

## Data Sheet

### DNA Polymerase $\beta$

Human, recombinant, N-terminal His-tag  
Catalog #: 21000-2  
Lot #: 170202      Conc.: 5.14 mg/ml

**Formulated in:** 40 mM Tris-HCl, pH 8.0,  
110 mM NaCl, 2.2 mM KCl, 250 mM  
imidazole, 0.04% Tween-20, and 20%  
glycerol.

**Stability:** At least 6 months at  $-80^{\circ}\text{C}$ . Avoid  
freeze/thaw cycles. Storing diluted enzyme  
is not recommended, if necessary, use  
carrier protein (BSA 0.1 – 0.5%).

**References:**

1. Yamtich, J., *et al.*, *PLoS Genet.*  
2012;**8(11)**: E1003052.
2. Wang, K., *et al.*, *Cancer Res.*  
1992;**52(17)**: 4824-4827.

**Description:**

Human DNA polymerase  $\beta$  (beta), also  
known as Pol beta and POLB (GenBank  
Accession No. NM\_002690), amino-acids  
2-335 (end), with N-terminal His-tag,  
MW=39 kDa, expressed in an *E. coli* cell  
expression system.

**Application:**

Useful for DNA synthesis and DNA repair,  
as an antigen for Western blotting, and for  
inhibitor screening.

### Quality Assurance

**4-20% SDS-PAGE  
Coomassie staining**

**Lane 1:**

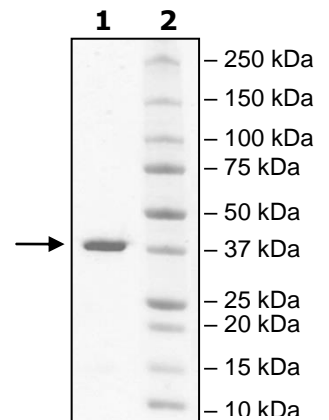
2 $\mu\text{g}$  POLB

**Lane 2:**

Protein Marker

**MW:** 39 kDa

**Purity:**  $\geq 90\%$



OUR PRODUCTS ARE FOR RESEARCH USE ONLY. NOT FOR DIAGNOSTIC OR THERAPEUTIC USE.

To place your order, please contact us by Phone **1.858.829.3082** Fax **1.858.481.8694**

Or you can Email us at: [info@bpsbioscience.com](mailto:info@bpsbioscience.com)

Please visit our website at: [www.bpsbioscience.com](http://www.bpsbioscience.com)



6044 Cornerstone Court West, Suite E  
San Diego, CA 92121  
Tel: 1.858.829.3082  
Fax: 1.858.481.8694  
Email: [info@bpsbioscience.com](mailto:info@bpsbioscience.com)

**Sequence:**

**MHHHHHH**SKRKAPQETLNGGITDMLTELANFEKNVSQAIHKYNAYRKAASVIKYPH  
KIKSGAEAKKLPVGTGKIAEKIDEFLATGKLRKLEKIRQDDTSSSINFLTRVSGIGPSAA  
RKFDVDEGIKTLEDLRKNEDKLNHHQRIGLKYFGDFEKRIPREEMLQMQDIVLNEVKKV  
DSEYIATVCGSFRRGAESSGDMDVLLTHPSFTSESTKQPKLLHQVVEQLQKVHFITDT  
LSKGETKFMGVCQLPSKNDEKEYPHRRIDIRLIPKDQYYCGVLYFTGSDIFNKNMRAH  
ALEKGFTINEYTIRPLGVTGVAGEPLPVDSEKDIFDYIQWKYREPKDRSE

OUR PRODUCTS ARE FOR RESEARCH USE ONLY. NOT FOR DIAGNOSTIC OR THERAPEUTIC USE.

To place your order, please contact us by Phone **1.858.829.3082** Fax **1.858.481.8694**  
Or you can Email us at: [info@bpsbioscience.com](mailto:info@bpsbioscience.com)  
Please visit our website at: [www.bpsbioscience.com](http://www.bpsbioscience.com)