



# SZABO SCANDIC

Part of Europa Biosite

## Produktinformation



Forschungsprodukte & Biochemikalien



Zellkultur & Verbrauchsmaterial



Diagnostik & molekulare Diagnostik



Laborgeräte & Service

Weitere Information auf den folgenden Seiten!  
See the following pages for more information!



### Lieferung & Zahlungsart

siehe unsere [Liefer- und Versandbedingungen](#)

### Zuschläge

- Mindermengenzuschlag
- Trockeneiszuschlag
- Gefahrgutzuschlag
- Expressversand

### SZABO-SCANDIC HandelsgmbH

Quellenstraße 110, A-1100 Wien

T. +43(0)1 489 3961-0

F. +43(0)1 489 3961-7

[mail@szabo-scandic.com](mailto:mail@szabo-scandic.com)

[www.szabo-scandic.com](http://www.szabo-scandic.com)

[linkedin.com/company/szaboscandic](https://www.linkedin.com/company/szaboscandic) 

## Data Sheet

### Zebov GP1,2, Biotin-labeled

Zaire Ebola Virus, Recombinant GP1,2, C-terminal  
Avi-biotin, His-tag

**Catalog #:** 21004

**Lot #:** 150218-B

**Conc:** 0.18 mg/ml

**Formulated in:** 8 mM phosphate, pH 7.4, 110 mM NaCl, 2.2 mM KCl, and 20% glycerol

**Stability:** At least 6 months at  $-80^{\circ}\text{C}$ . *Avoid freeze/thaw cycles. Storing diluted protein is not recommended, if necessary, use carrier protein (BSA 0.1 – 0.5%).*

**References:**

1. Lee, J.E., *et al.*, *Nature*. 2008; **454(7201)**: 177-182.
2. Dube, D., *et al.*, *J. Virol.* 2009; **83(7)**: 2883-2891.

**Description:** Zaire Ebola Virus (Zebov) glycoprotein 1,2 (GP1,2), also known as envelope glycoprotein, and GP, a.a. 33-650 with a C-terminal Avi and His-tag, GenBank Accession No. NP\_066246, MW = 70.6 kDa, expressed in a HEK293 cell expression system. The protein was enzymatically biotinylated using AviTag™ technology. This protein runs at a higher apparent molecular weight due to glycosylation.

**Application:** Useful for protein binding studies, screening inhibitors of protein-protein interactions, and studying protein function.

## Quality Assurance

**4-20% SDS-PAGE  
Coomassie staining**

**Lane 1:**

3  $\mu\text{g}$  Zebov GP1,2

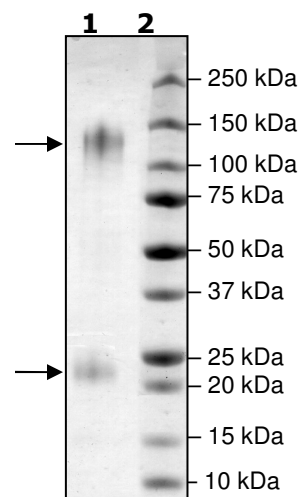
**Lane 2:**

Protein Marker

**MW:** GP1 – 51 kDa + glycans

GP2 – 20 kDa + glycans

**Purity:**  $\geq 90\%$



OUR PRODUCTS ARE FOR RESEARCH USE ONLY. NOT FOR DIAGNOSTIC OR THERAPEUTIC USE.

To place your order, please contact us by Phone **1.858.829.3082** Fax **1.858.481.8694**

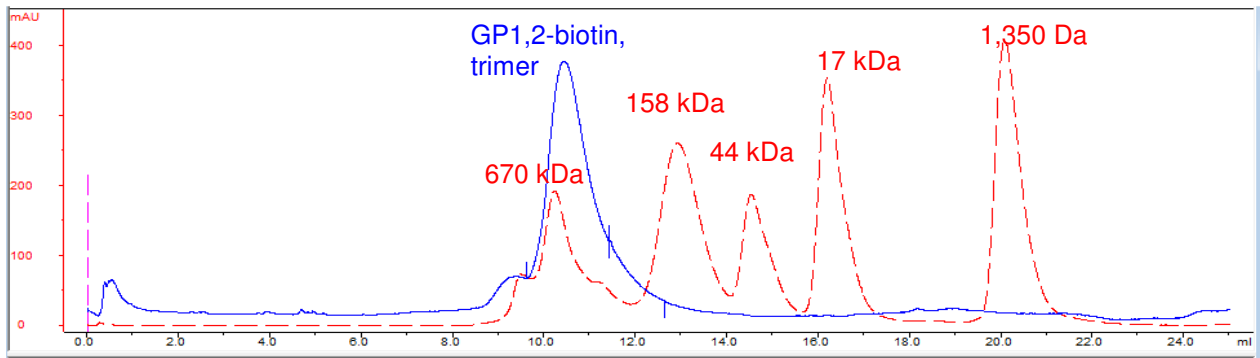
Or you can Email us at: [info@bpsbioscience.com](mailto:info@bpsbioscience.com)

Please visit our website at: [www.bpsbioscience.com](http://www.bpsbioscience.com)



6044 Cornerstone Court W, Ste E  
San Diego, CA 92121  
**Tel:** 1.858.829.3082  
**Fax:** 1.858.481.8694  
**Email:** [info@bpsbioscience.com](mailto:info@bpsbioscience.com)

## Gel Filtration Trace



OUR PRODUCTS ARE FOR RESEARCH USE ONLY. NOT FOR DIAGNOSTIC OR THERAPEUTIC USE.

To place your order, please contact us by Phone **1.858.829.3082** Fax **1.858.481.8694**  
Or you can Email us at: [info@bpsbioscience.com](mailto:info@bpsbioscience.com)  
Please visit our website at: [www.bpsbioscience.com](http://www.bpsbioscience.com)