



# SZABO SCANDIC

Part of Europa Biosite

## Produktinformation



Forschungsprodukte & Biochemikalien



Zellkultur & Verbrauchsmaterial



Diagnostik & molekulare Diagnostik



Laborgeräte & Service

Weitere Information auf den folgenden Seiten!  
See the following pages for more information!



### Lieferung & Zahlungsart

siehe unsere [Liefer- und Versandbedingungen](#)

### Zuschläge

- Mindermengenzuschlag
- Trockeneiszuschlag
- Gefahrgutzuschlag
- Expressversand

### SZABO-SCANDIC HandelsgmbH

Quellenstraße 110, A-1100 Wien

T. +43(0)1 489 3961-0

F. +43(0)1 489 3961-7

[mail@szabo-scandic.com](mailto:mail@szabo-scandic.com)

[www.szabo-scandic.com](http://www.szabo-scandic.com)

[linkedin.com/company/szaboscandic](https://www.linkedin.com/company/szaboscandic) 

## Data Sheet

### Anti-RFP Tag

Mouse Monoclonal Antibody  
Anti-RFP (Red Fluorescent Protein) Tag (RF5R)  
**Catalog #:** 25013  
**Lot #:** 120106

#### Specificity:

Recognizes native and denatured forms of RFP and its variants: tag-RFP, turbo-RFP, DeRed, mCherry, mOrange, etc.

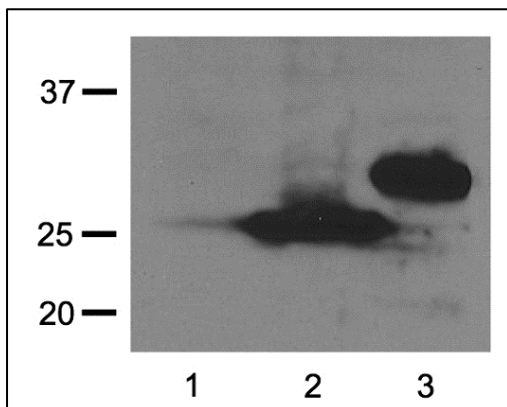
#### Immunogen:

N-terminal peptide from RFP (Discosoma sea anemone)- KLH conjugate

#### Applications:

Dot Blot, ELISA, IP, ICC, WB

#### Image:



**Fig.** 1:1000 (1µg/mL) Ab dilution probed against HEK293 cells transfected with RFP-tagged protein vector; untransfected control (1), transfected with Turbo-RFP (2), and transfected with DeRed (3).

#### Clonality | Host Species | Isotype:

RF5R | Mouse | IgG1

#### Formulation:

1mg/mL in 10mM PBS, pH 7.2, with 0.05% NaN<sub>3</sub>

#### Sensitivity:

WB (with ECL): 1-10ng of purified RFP or RFP fusion proteins

#### Working Conditions:

WB (with ECL): 1:1000-3000 dilution (incubate for 1 hour at room temperature)

ICC: 1:500-2000 dilution

In order to obtain best results in other assays (e.g.: Dot Blot, ELISA, IP, etc.), please determine optimal working dilution by titration test

#### Purification:

Protein A affinity chromatography from mouse ascites fluid

#### Storage and Stability:

Store at -20°C for up to 2 years. Centrifuge after first thaw to maximize product recovery. Aliquot to avoid repeated freeze-thaw cycles. Store aliquots at 4°C for 1-2 weeks

OUR PRODUCTS ARE FOR IN VITRO RESEARCH USE ONLY. NOT FOR DIAGNOSTIC OR THERAPEUTIC USE.

To place your order, please contact us by Phone **1.858.829.3082** Fax **1.858.481.8694**

Or you can Email us at: [info@bpsbioscience.com](mailto:info@bpsbioscience.com)

Please visit our website at: [www.bpsbioscience.com](http://www.bpsbioscience.com)