



# SZABO SCANDIC

Part of Europa Biosite

## Produktinformation



Forschungsprodukte & Biochemikalien



Zellkultur & Verbrauchsmaterial



Diagnostik & molekulare Diagnostik



Laborgeräte & Service

Weitere Information auf den folgenden Seiten!  
See the following pages for more information!



### Lieferung & Zahlungsart

siehe unsere [Liefer- und Versandbedingungen](#)

### Zuschläge

- Mindermengenzuschlag
- Trockeneiszuschlag
- Gefahrgutzuschlag
- Expressversand

### SZABO-SCANDIC HandelsgmbH

Quellenstraße 110, A-1100 Wien

T. +43(0)1 489 3961-0

F. +43(0)1 489 3961-7

[mail@szabo-scandic.com](mailto:mail@szabo-scandic.com)

[www.szabo-scandic.com](http://www.szabo-scandic.com)

[linkedin.com/company/szaboscandic](https://www.linkedin.com/company/szaboscandic) 

## LY171883

**Catalog #:** 27211

**Lot #:** 120605

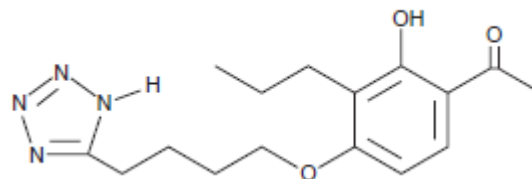
**Size:** 10 mg

**Structure:**

**CAS Registry #:** 88107-10-2

**Purity:** >98%

**Chemical Formula:** C<sub>16</sub>H<sub>22</sub>N<sub>4</sub>O<sub>3</sub>



**Molecular Weight:** 318.4

**Description:** LY171883 is a PDE inhibitor and a selective, potent inhibitor of the leukotriene D<sub>4</sub> receptor. Also, LY171883 binds to the PPAR $\gamma$  nuclear receptor at 50-100  $\mu$ M and induces adipogenesis in cultured NIH3T3 fibroblasts.

**Appearance:** A crystalline solid

**Solubility:** Soluble in ethanol, DMSO and DMF, purged with an inert gas. Solubility in ethanol, DMSO and DMF is approximately 25 mg/ml. For maximum solubility in aqueous buffers, dissolve directly in 0.5 M Na<sub>2</sub>CO<sub>3</sub> (15 mg/ml) then dilute with PBS (pH 7.2) to the desired concentration or pH. Do not store aqueous solutions for more than one day.

**Biological Activity:** LY171883 inhibits PDEs from human polymorphonuclear leukocytes with an IC<sub>50</sub> of 22.6  $\mu$ M, and from guinea pig tissues with an IC<sub>50</sub> range from 6.9 – 209  $\mu$ M.

**Storage/Stability:** Store at or below -20°C for up to two years.

**Quality Control:** The purity was determined by HPLC analysis.

### References:

1. Fleisch, J.H., *et al.*, *J. Pharmacol. Exp. Ther.* 1985; **233**: 148-157.
2. Forman, B.M., *et al.*, *Cell.* 1995; **83**: 803-812.
3. Tontonoz, P., *et al.*, *Cell.* 1994; **79**: 1147-1156.