



SZABO SCANDIC

Part of Europa Biosite

Produktinformation



Forschungsprodukte & Biochemikalien



Zellkultur & Verbrauchsmaterial



Diagnostik & molekulare Diagnostik



Laborgeräte & Service

Weitere Information auf den folgenden Seiten!
See the following pages for more information!



Lieferung & Zahlungsart

siehe unsere [Liefer- und Versandbedingungen](#)

Zuschläge

- Mindermengenzuschlag
- Trockeneiszuschlag
- Gefahrgutzuschlag
- Expressversand

SZABO-SCANDIC HandelsgmbH

Quellenstraße 110, A-1100 Wien

T. +43(0)1 489 3961-0

F. +43(0)1 489 3961-7

mail@szabo-scandic.com

www.szabo-scandic.com

[linkedin.com/company/szaboscandic](https://www.linkedin.com/company/szaboscandic) 

Data Sheet

PRL3

Human, recombinant, N-terminal HIS tag

Catalog #: 30002

Lot#: 130220-G **Conc.:** 0.54 mg/ml

Formulated in: 40 mM Tris-HCl, pH 8.0,
 110 mM NaCl, 2.2mM KCl, 20% glycerol,
 and 3 mM DTT.

Stability: >6 months at -80°C

References:

1. Dai N. *et al.*, *World J. Gastroenterol.* **15** (12), 1499-1505 (2009).
2. Radke I. *et al.*, *Br. J. Cancer.* **95** (3), 347-354 (2006).

Description:

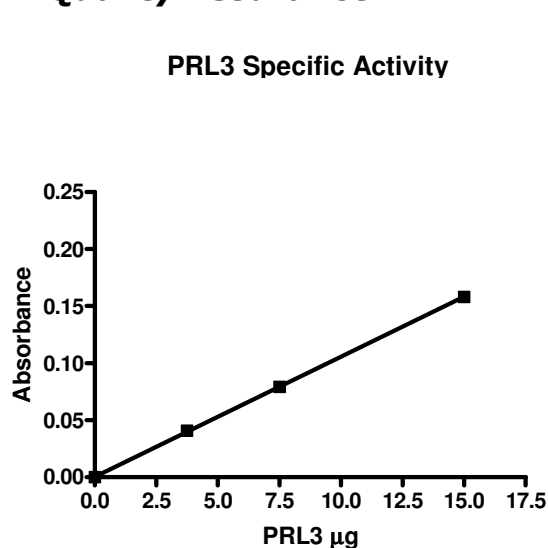
Human PRL 3 (GenBank Accession No. NM_032611), (a-a 2-173) with N-terminal HIS tag, MW = 20.4 kDa, expressed in an *E. coli* expression system.

Specific Activity: 0.53 pmol/min/μg,
 Assay conditions: enzyme was incubated in 50 mM Tris pH7.4, 150 mM NaCl 5 mM DTT, and 12.5 mM PNPP as a substrate for 2h at 37°C. Absorbance was read by Tecan spectrophotometer at 405 nm wavelength.

Application:

Useful for the study of enzyme kinetics, screening inhibitors, and selectivity profiling.

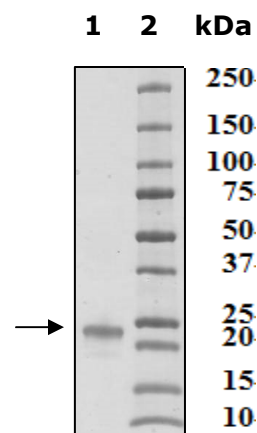
Quality Assurance



4-20% SDS-PAGE
Coomassie staining

Lane 1:
 3 μg PRL3
Lane 2:
 Protein Marker
 BioLabs (#P7708L)

MW: 20.4 kDa
Purity: ≥90%



OUR PRODUCTS ARE FOR RESEARCH USE ONLY. NOT FOR DIAGNOSTIC OR THERAPEUTIC USE.

To place your order, please contact us by Phone **1.858.829.3082** Fax **1.858.481.8694**

Or you can Email us at: info@bpsbioscience.com

Please visit our website at: www.bpsbioscience.com