



SZABO SCANDIC

Part of Europa Biosite

Produktinformation



Forschungsprodukte & Biochemikalien



Zellkultur & Verbrauchsmaterial



Diagnostik & molekulare Diagnostik



Laborgeräte & Service

Weitere Information auf den folgenden Seiten!
See the following pages for more information!



Lieferung & Zahlungsart

siehe unsere [Liefer- und Versandbedingungen](#)

Zuschläge

- Mindermengenzuschlag
- Trockeneiszuschlag
- Gefahrgutzuschlag
- Expressversand

SZABO-SCANDIC HandelsgmbH

Quellenstraße 110, A-1100 Wien

T. +43(0)1 489 3961-0

F. +43(0)1 489 3961-7

mail@szabo-scandic.com

www.szabo-scandic.com

[linkedin.com/company/szaboscandic](https://www.linkedin.com/company/szaboscandic) 

Data Sheet

MEG-2 PTP-MEG2

Human, recombinant, N-terminal GST tag
Catalog #: 30020
 Lot#: 070725 Conc.: 1.0 mg/ml

Formulated in: 25 mM Tris-HCl, pH 8.0, 67 mM NaCl, 1.4 mM KCl, 50% glycerol, 10 mM glutathione, and 3 mM DTT.

Stability: >6 months at -80°C

References:

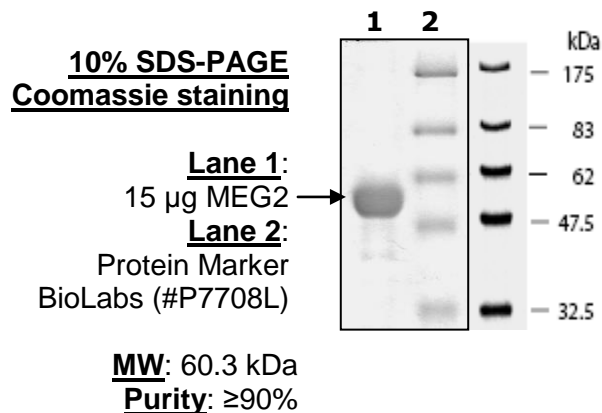
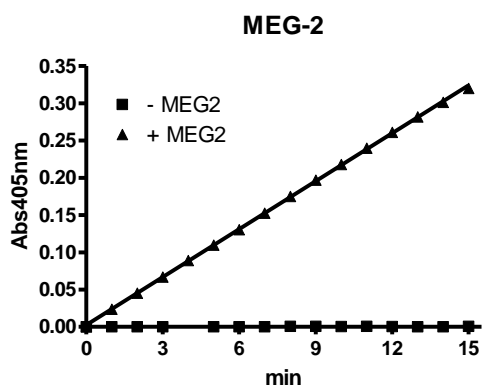
1. Q. Ying, *et al.*, *J. Cell Biochem.* 2002, **86**: 79
2. H. Huynh, *et al.* *J. Immunol.* 2003, **171**: 6661

Description: Protein tyrosine phosphatase, Catalytic domain, (a.a. 285-582) (Genbank accession number M83738) with N-terminal GST tag, MW=60.3 kDa, expressed in an *E. coli* expression system.

Specific Activity: 1070 pmole/min/μg. Assay condition: 20 mM HEPES, pH 7.2, 100 mM NaCl, 2 mM EDTA, 1 mM DTT, 1 mM pNPP and 2 ng/μl MEG-2. Assay was done at RT for 15 min, and the reaction was monitored at 405 nm continuously. Specific activity was calculated based on $\epsilon_{pNPP} = 18,000 \text{ M}^{-1}\text{cm}^{-1}$.

Application: Useful for the study of enzyme kinetics, screening inhibitors, and selectivity profiling.

Quality Assurance



OUR PRODUCTS ARE FOR RESEARCH USE ONLY. NOT FOR DIAGNOSTIC OR THERAPEUTIC USE.

To place your order, please contact us by Phone **1.858.829.3082** Fax **1.858.481.8694**
 Or you can Email us at: info@bpsbioscience.com
 Please visit our website at: www.bpsbioscience.com