



SZABO SCANDIC

Part of Europa Biosite

Produktinformation



Forschungsprodukte & Biochemikalien



Zellkultur & Verbrauchsmaterial



Diagnostik & molekulare Diagnostik



Laborgeräte & Service

Weitere Information auf den folgenden Seiten!
See the following pages for more information!



Lieferung & Zahlungsart

siehe unsere [Liefer- und Versandbedingungen](#)

Zuschläge

- Mindermengenzuschlag
- Trockeneiszuschlag
- Gefahrgutzuschlag
- Expressversand

SZABO-SCANDIC HandelsgmbH

Quellenstraße 110, A-1100 Wien

T. +43(0)1 489 3961-0

F. +43(0)1 489 3961-7

mail@szabo-scandic.com

www.szabo-scandic.com

[linkedin.com/company/szaboscandic](https://www.linkedin.com/company/szaboscandic) 

Data Sheet

SHP-1, GST-tag

Human, Recombinant, N-terminal GST-tag

Catalog #: 30021

Lot #: 171013-2 **Conc:** 2 mg/ml

Formulated in: 40mM Tris pH8, 110mM NaCl, 2.2mM KCl, 0.04% Tween, 10mM GSH, 50% glycerol, 3mM DTT, 2mM EDTA.

Stability: At least 6 months at -80°C . Avoid freeze/thaw cycles. Storing diluted enzyme is not recommended, if necessary, use carrier protein (BSA 0.1 – 0.5%).

References:

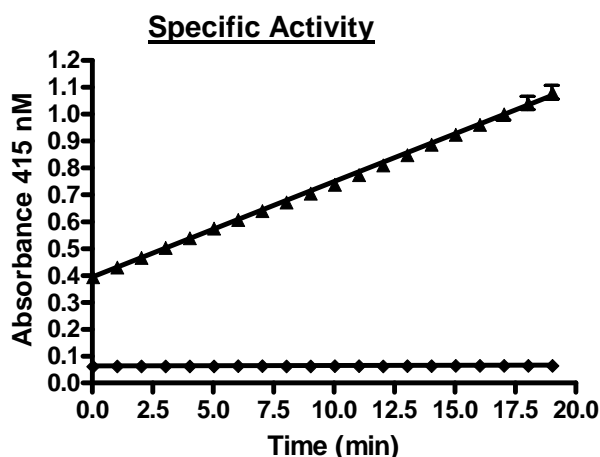
1. Stebbins, C.C., *et al.*, *Mol. Cell Biol.* 2003; **23**: 6291-6299.
2. Ganesan, L.P., *et al.*, *J. Biol. Chem.* 2003; **278**: 35710-35717.

Description: Human SHP-1 also known as tyrosine-protein phosphatase non-receptor type 6 (PTPN6), protein tyrosine phosphatase 1 C (PTP-1C), and SH-PTP1, a.a. 1-577 with N-terminal GST tag, MW=93 kDa, expressed in an *E. coli* expression system.

Specific Activity: 7.5 pmol/min/ μg
 Assay Conditions: Enzyme reaction (50 μl) containing 20 mM HEPES, pH 7.2, 100 mM NaCl, 2 mM EDTA, 10 mM DTT, 1 mM pNPP and PTPase was monitored at 415 nm continuously with readings at 1 minute intervals for 20 minutes.

Application: Useful for the study of enzyme kinetics, regulation, to dephosphorylate target substrates and for screening inhibitors.

Quality Assurance



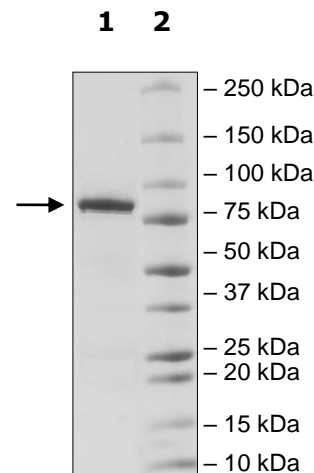
4-20% SDS-PAGE
Coomassie staining

Lane 1:
 3 μg PTPN6(SHP1)

Lane 2:
 Protein Marker

MW:
 93 kDa

Purity: $\geq 80\%$



OUR PRODUCTS ARE FOR RESEARCH USE ONLY. NOT FOR DIAGNOSTIC OR THERAPEUTIC USE.

To place your order, please contact us by Phone **1.858.829.3082** Fax **1.858.481.8694**

Or you can Email us at: info@bpsbioscience.com

Please visit our website at: www.bpsbioscience.com