



SZABO SCANDIC

Part of Europa Biosite

Produktinformation



Forschungsprodukte & Biochemikalien



Zellkultur & Verbrauchsmaterial



Diagnostik & molekulare Diagnostik



Laborgeräte & Service

Weitere Information auf den folgenden Seiten!
See the following pages for more information!



Lieferung & Zahlungsart

siehe unsere [Liefer- und Versandbedingungen](#)

Zuschläge

- Mindermengenzuschlag
- Trockeneiszuschlag
- Gefahrgutzuschlag
- Expressversand

SZABO-SCANDIC HandelsgmbH

Quellenstraße 110, A-1100 Wien

T. +43(0)1 489 3961-0

F. +43(0)1 489 3961-7

mail@szabo-scandic.com

www.szabo-scandic.com

[linkedin.com/company/szaboscandic](https://www.linkedin.com/company/szaboscandic) 

Data Sheet

SHP-2

Human, recombinant, N-terminal GST-tag
 Catalog #: 30022
 Lot #: 130807A Conc.: 0.73 mg/ml

Formulated in: 25 mM Tris pH 8, 150 mM NaCl, 0.05% Tween-20%, 2 mM EDTA, 1 mM DTT, 50% glycerol, and 10 mM Glutathione.

Stability: >6 months at -80°C

References:

1. B.G. Neel *et al.* *Trends Biochem. Sci.* (2003) **28**: 284
2. J.V. Ravetch & L.L. Lanier *Science* (2000) **290**: 84
3. S. Yamazaki *et al.* *J. Infect. Dis.* (2003) **187**: 33

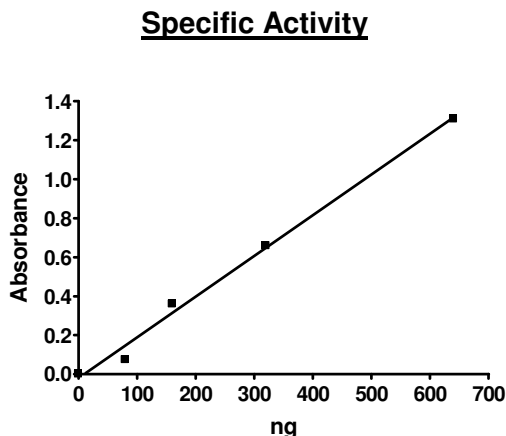
Description: Human recombinant SHP-2, also known as PTPN11 (protein tyrosine phosphatase N11), catalytic domain, (a.a. 224-529) with N-terminal GST-tag, MW=62 kDa, expressed in an *E. coli* expression system.

Specific Activity: 10 U/μg. One unit will hydrolyze 1 nmol p-nitrophenyl phosphate per minute at pH 7.4 and 30°C.

Assay conditions: 50 mM HEPES, pH 7.4, 2 mM EDTA, 3 mM DTT, 100 mM NaCl, 50 mM pNPP substrate. Incubate for 20 minutes at 30°C. Absorbance is measured at 405 nM.

Application: Useful for the study of enzyme kinetics, screening inhibitors, and selectivity profiling.

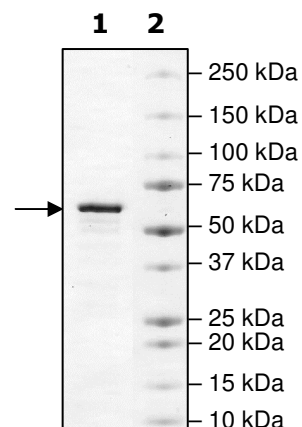
Quality Assurance



**4-20% SDS-PAGE
Coomassie staining**

Lane 1:
2 μg SHP-2
Lane 2:
Protein Marker

MW: 62 kDa
Purity: ≥90%



OUR PRODUCTS ARE FOR RESEARCH USE ONLY. NOT FOR DIAGNOSTIC OR THERAPEUTIC USE.

To place your order, please contact us by Phone **1.858.829.3082** Fax **1.858.481.8694**
 Or you can Email us at: info@bpsbioscience.com
 Please visit our website at: www.bpsbioscience.com



6044 Cornerstone Court West, Suite E
San Diego, CA 92121
Tel: 1.858.829.3082
Fax: 1.858.481.8694
Email: info@bpsbioscience.com

Protein Sequence:

MSPILGYWKIKGLVQPTRLLEYLEEKYEEHLYERDEGDKWRNKKFELGLEFPNLPYYID
GDVKLTQSMAIIRYIADKHNMLGGCPKERAEISMLEGAVLDIRYGVSRIAYSKDFETLKVDF
LSKLPEMLKMFEDRLCHKTYLNGDHVTHPDFMLYDALDVVLYMDPMCLDAFPKLVCFKK
RIEAI PQIDKYLKSSKYIAWPLQGWQATFGGGDHPPKSDLVPRGSASAEIESRVRELSKL
AETTDKVKQGFWEFETLQQQECKLLYSRKEGQRQENKNKNRYKNILPFDHTRVVLHD
GDPNEPVSDYINANIIMPEFETKCNSKPKKSYIATQGCLQNTVNDFWRMVFGENS RVIV
MTTKEVERGKSKCVKYWPDEYALKEYGVMRVRNVKESAAHDYTLRELKLSKVGQGNT
ERTVWQYHFRTWPDHGVPSDPGGVLD FLEEVHHKQESIMDAGP VVVHCSAGIGRTGTF
IVIDILIDIIREKGVDCDIDVPKTIQMVR SQRS GMVQTEAQYRFIYMAVQHYIETLQRRILE

OUR PRODUCTS ARE FOR RESEARCH USE ONLY. NOT FOR DIAGNOSTIC OR THERAPEUTIC USE.

To place your order, please contact us by Phone **1.858.829.3082** Fax **1.858.481.8694**
Or you can Email us at: info@bpsbioscience.com
Please visit our website at: www.bpsbioscience.com