



# SZABO SCANDIC

Part of Europa Biosite

## Produktinformation



Forschungsprodukte & Biochemikalien



Zellkultur & Verbrauchsmaterial



Diagnostik & molekulare Diagnostik



Laborgeräte & Service

Weitere Information auf den folgenden Seiten!  
See the following pages for more information!



### Lieferung & Zahlungsart

siehe unsere [Liefer- und Versandbedingungen](#)

### Zuschläge

- Mindermengenzuschlag
- Trockeneiszuschlag
- Gefahrgutzuschlag
- Expressversand

### SZABO-SCANDIC HandelsgmbH

Quellenstraße 110, A-1100 Wien

T. +43(0)1 489 3961-0

F. +43(0)1 489 3961-7

[mail@szabo-scandic.com](mailto:mail@szabo-scandic.com)

[www.szabo-scandic.com](http://www.szabo-scandic.com)

[linkedin.com/company/szaboscandic](https://www.linkedin.com/company/szaboscandic) 

## Data Sheet

### PTPβ

Human, recombinant, N-terminal GST tag  
**Catalog #:** 30042  
**Lot #:** 141117                      **Conc.:** 4.8 mg/ml

**Formulated in:** 40 mM Tris-HCl, pH 8.0.  
 110 mM NaCl, 2.2 mM KCl, 3 mM DTT, 16  
 mM glutathione and 20% glycerol

**Stability:** At least 6 months at  $-80^{\circ}\text{C}$ .  
 Avoid freeze/thaw cycles. Storing diluted  
 enzyme is not recommended, if necessary,  
 use carrier protein (BSA 0.1 – 0.5%).

**References:**

1. I. K. Lund et al., *J Biol Chem.* 2004,  
**279:** 24226-35.
2. G.H. Peters et al., *Biochimie.* 2003,  
**85:** 527-34.

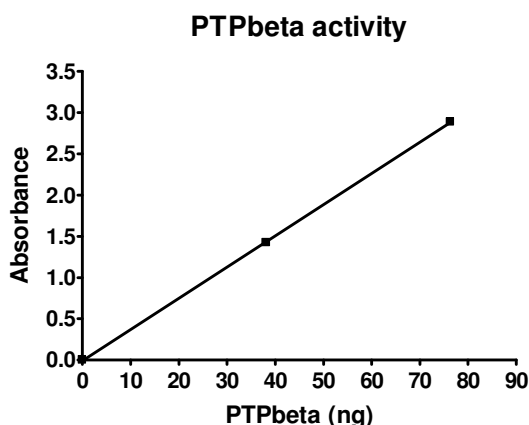
**Description:** PTPβ (protein tyrosine  
 phosphatase beta), catalytic domain, (a.a.  
 1675-1996) with N-terminal GST tag,  
 MW=63.7 kDa, expressed in an *E. coli*  
 expression system.

**Specific Activity:** 55 nmole/min/μg.

Assay conditions: 20 mM HEPES, pH 7.2,  
 2 mM EDTA, 1 mM DTT, 25 mM pNPP  
 and PTPβ. Reaction was done at room  
 temperature for 10 minutes, and monitored  
 at Abs 405 nm continuously.  $\epsilon$  of pNPP =  
 $18,000 \text{ M}^{-1}\text{cm}^{-1}$

**Application:** Useful for the study of  
 enzyme kinetics, regulation, to  
 dephosphorylate target substrates and for  
 screening inhibitors.

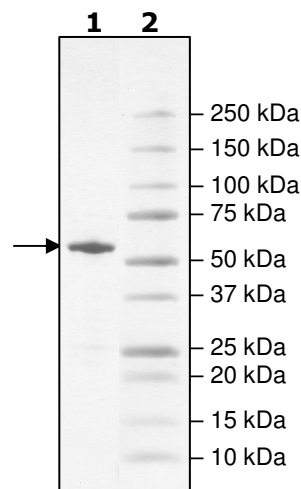
### Quality Assurance



**4-20% SDS-PAGE**  
**Coomassie staining**

**Lane 1:**  
 2.4 μg PTPbeta  
**Lane 2:**  
 Protein Marker

**MW:** 64 kDa  
**Purity:**  $\geq 90\%$



OUR PRODUCTS ARE FOR RESEARCH USE ONLY. NOT FOR DIAGNOSTIC OR THERAPEUTIC USE.

To place your order, please contact us by Phone **1.858.829.3082** Fax **1.858.481.8694**  
 Or you can Email us at: [info@bpsbioscience.com](mailto:info@bpsbioscience.com)  
 Please visit our website at: [www.bpsbioscience.com](http://www.bpsbioscience.com)