



# SZABO SCANDIC

Part of Europa Biosite

## Produktinformation



Forschungsprodukte & Biochemikalien



Zellkultur & Verbrauchsmaterial



Diagnostik & molekulare Diagnostik



Laborgeräte & Service

Weitere Information auf den folgenden Seiten!  
See the following pages for more information!



### Lieferung & Zahlungsart

siehe unsere [Liefer- und Versandbedingungen](#)

### Zuschläge

- Mindermengenzuschlag
- Trockeneiszuschlag
- Gefahrgutzuschlag
- Expressversand

### SZABO-SCANDIC HandelsgmbH

Quellenstraße 110, A-1100 Wien

T. +43(0)1 489 3961-0

F. +43(0)1 489 3961-7

[mail@szabo-scandic.com](mailto:mail@szabo-scandic.com)

[www.szabo-scandic.com](http://www.szabo-scandic.com)

[linkedin.com/company/szaboscandic](https://www.linkedin.com/company/szaboscandic) 

## Data Sheet

### PTP IA2

Human, recombinant, N-terminal GST-tag

**Catalog #:** 30054

Lot #: 1007

Conc.: 0.4 mg/ml

**Formulated in:** 25 mM Tris-HCl, pH 8.0, 75 mM NaCl, 0.05% Tween-20, 50% glycerol, 2 mM EDTA, 1 mM DTT, and 10 mM glutathione.

**Stability:** >6 months at -80°C

#### References:

1. Ort, T., *et al.*, *EMBO J.* 2001, **20**: 4013-23
2. Li, Z., *et al.*, *J Histochem Cytochem.* 2000, **48**:761-7

#### Description:

Protein tyrosine phosphatase. (PTP-IA2, ICA-512), Catalytic domain, (a.a. 693-979), (Gene bank accession no. 002846), with N-terminal GST tag, MW=58.8 kDa, expressed in an *E. coli* expression system.

#### Application:

Suitable for use as an immunogen, in binding assays or as an antigen in autoimmune assays.

### Quality Assurance

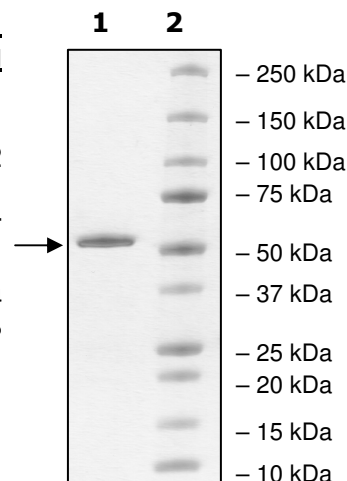
#### 4-20% SDS-PAGE Coomassie staining

**Lane 1:**  
2 µg PTP-IA2

**Lane 2:**  
Protein Marker

**MW:** 58.8 kDa

**Purity:** ≥95%



OUR PRODUCTS ARE FOR RESEARCH USE ONLY. NOT FOR DIAGNOSTIC OR THERAPEUTIC USE.

To place your order, please contact us by Phone **1.858.829.3082** Fax **1.858.259.5734**

Or you can Email us at: [info@bpsbioscience.com](mailto:info@bpsbioscience.com)

Please visit our website at: [www.bpsbioscience.com](http://www.bpsbioscience.com)