



# SZABO SCANDIC

Part of Europa Biosite

## Produktinformation



Forschungsprodukte & Biochemikalien



Zellkultur & Verbrauchsmaterial



Diagnostik & molekulare Diagnostik



Laborgeräte & Service

Weitere Information auf den folgenden Seiten!  
See the following pages for more information!



### Lieferung & Zahlungsart

siehe unsere [Liefer- und Versandbedingungen](#)

### Zuschläge

- Mindermengenzuschlag
- Trockeneiszuschlag
- Gefahrgutzuschlag
- Expressversand

### SZABO-SCANDIC HandelsgmbH

Quellenstraße 110, A-1100 Wien

T. +43(0)1 489 3961-0

F. +43(0)1 489 3961-7

[mail@szabo-scandic.com](mailto:mail@szabo-scandic.com)

[www.szabo-scandic.com](http://www.szabo-scandic.com)

[linkedin.com/company/szaboscandic](https://www.linkedin.com/company/szaboscandic) 

## Data Sheet

### PP2A- $\alpha$ , His-tag/PP2AR, GST-tag

Human, recombinant, N-terminal GST-tag

**Catalog#:** 30056

**Lot#:** 150914-G      **Conc.:** 0.21 mg/ml

**Formulated in:** 40 mM Tris-HCl, pH 8.0,  
 110 mM NaCl, 2.2 mM KCl, 20% glycerol  
 and 16 mM glutathione

**Stability:** At least 6 months at  $-80^{\circ}\text{C}$ . *Avoid freeze/thaw cycles. Storing diluted protein is not recommended, if necessary, use carrier protein (BSA 0.1 – 0.5%).*

**References:**

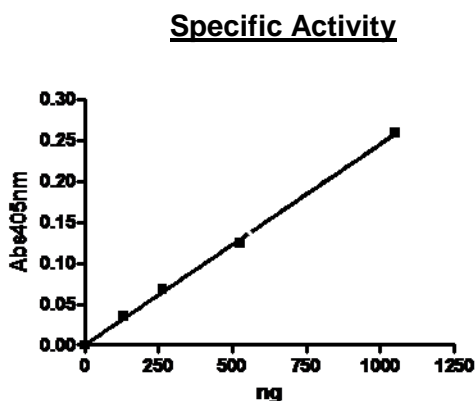
1. Van Hoof, C. *et al.*, *Genomics*. 1995; **28**: 261-272.
2. Chao, Y. *et al.*, *Molec. Cell*. 2006; **23**: 535-546.

**Description:** Protein complex of human protein phosphatase 2A catalytic subunit  $\alpha$  (PP2A $\alpha$ ), also known as TPD3, RP-C, PP2Ac, and PPP2CA (GenBank Accession NM\_002715, a.a. 2-309 with C-terminal His-tag) and human protein phosphatase 2A regulatory subunit (PP2AR) (GenBank Accession NM\_014225, a.a. 2-589 with N-terminal GST-tag). Co-expressed in a baculovirus-infected Sf9 cell expression system. MW = 36 kDa (PP2A) and 92 kDa (PP2AR).

**Specific Activity:**  $\geq 100$  pmol/min/ $\mu\text{g}$   
 Assay Conditions: 20 mM HEPES, pH 7.2, 100 mM NaCl, 3 mM DTT, 10 mM pNPP and PP2A. Assay was done at  $37^{\circ}\text{C}$  for 40 min, and the reaction progress was measured at 405 nm. Specific activity was calculated based on  $\epsilon$  pNPP =  $18,000 \text{ M}^{-1}\text{cm}^{-1}$ .

**Application:** Useful for the study of enzyme kinetics and for inhibitor screening.

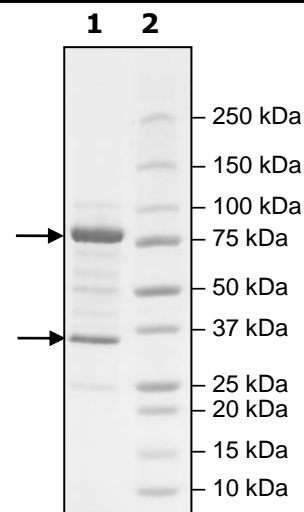
### Quality Assurance



**4-20% SDS-PAGE  
 Coomassie staining**

**Lane 1:**  
 4  $\mu\text{g}$  PP2A/PP2AR  
**Lane 2:**  
 Protein Marker

**MW:** 36 kDa PP2A  
 92 kDa PP2AR  
**Purity:**  $\geq 80\%$  (complex)



OUR PRODUCTS ARE FOR RESEARCH USE ONLY. NOT FOR DIAGNOSTIC OR THERAPEUTIC USE.

To place your order, please contact us by Phone **1.858.829.3082** Fax **1.858.481.8694**  
 Or you can Email us at: [info@bpsbioscience.com](mailto:info@bpsbioscience.com)  
 Please visit our website at: [www.bpsbioscience.com](http://www.bpsbioscience.com)