



# SZABO SCANDIC

Part of Europa Biosite

## Produktinformation



Forschungsprodukte & Biochemikalien



Zellkultur & Verbrauchsmaterial



Diagnostik & molekulare Diagnostik



Laborgeräte & Service

Weitere Information auf den folgenden Seiten!  
See the following pages for more information!



### Lieferung & Zahlungsart

siehe unsere [Liefer- und Versandbedingungen](#)

### Zuschläge

- Mindermengenzuschlag
- Trockeneiszuschlag
- Gefahrgutzuschlag
- Expressversand

### SZABO-SCANDIC HandelsgmbH

Quellenstraße 110, A-1100 Wien

T. +43(0)1 489 3961-0

F. +43(0)1 489 3961-7

[mail@szabo-scandic.com](mailto:mail@szabo-scandic.com)

[www.szabo-scandic.com](http://www.szabo-scandic.com)

[linkedin.com/company/szaboscandic](https://www.linkedin.com/company/szaboscandic) 

## Data Sheet

### **BRD2 (339-459), GST-tag**

Human, recombinant, N-terminal GST-tag  
**Catalog #:** 31023  
**Lot #:** 150311-1      **Conc.:** 3.2 mg/ml

**Formulated in:** 40 mM Tris-HCL, pH 8.0,  
 110 mM NaCl, 2.2 mM KCl and 20%  
 glycerol

**Stability:** At least 6 months at  $-80^{\circ}\text{C}$ .  
 Avoid freeze/thaw cycles. Storing diluted  
 protein is not recommended, if necessary,  
 use carrier protein (BSA 0.1 – 0.5%).

**References:**

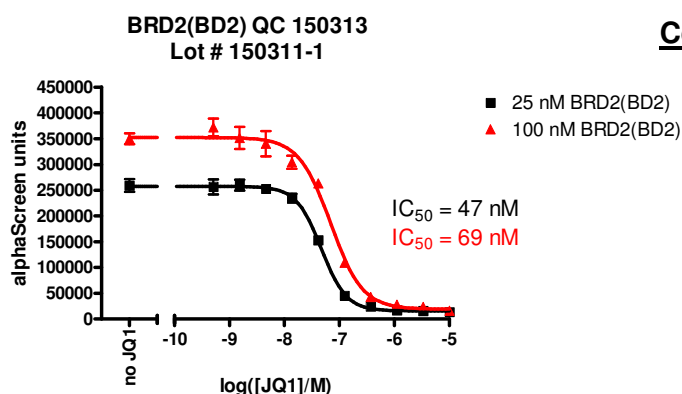
- Umehara, T., *et al.*, *FEBS Lett.* 2010  
 Sep 24; **584(18)**: 3901-3908.
- Shang, E., *et al.*, *J Cell Biochem.* 2011  
 Oct; **112(10)**: 2784-2793.

**Description:** Human Bromodomain  
 containing 2, also known as BRD2, RING3  
 or RNF3, amino-acids 339 – 459  
 (GenBank Accession No. NM\_005104)  
 with N-terminal GST tag, MW = 41.0 kDa,  
 expressed in an *E. coli* expression system.

**Assay Conditions:** Assay was performed  
 using BRD2 BD2 Inhibitor Screening  
 Assay Kit, Cat. #32522. BRD2 protein is  
 incubated with biotinylated acetyl-histone  
 peptide substrate (Cat. #33000) in BRD  
 assay buffer (Cat. #33001) in a 10  $\mu\text{l}$   
 reaction for 1 hour at RT. AlphaLISA®  
 GSH acceptor beads (Perkin Elmer) are  
 added, followed by AlphaScreen®  
 Streptavidin-conjugated donor beads  
 (Perkin Elmer). After 1 hour incubation at  
 RT, Alphacounts are measured.

**Application:** Useful for the study of  
 bromodomain binding assays, screening  
 inhibitors, and selectivity profiling.

### **Quality Assurance**

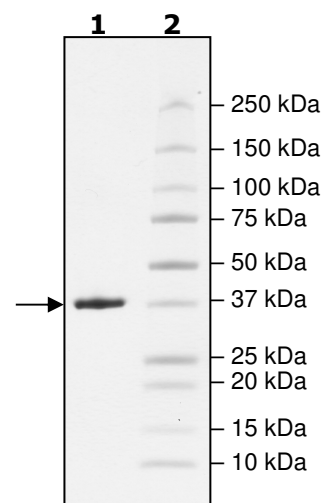


**4-20% SDS-PAGE  
 Coomassie staining**

**Lane 1:**  
 1.8  $\mu\text{g}$  BRD2

**Lane 2:**  
 Protein Marker

**MW:** 41 kDa  
**Purity:**  $\geq 95\%$



OUR PRODUCTS ARE FOR RESEARCH USE ONLY. NOT FOR DIAGNOSTIC OR THERAPEUTIC USE.

To place your order, please contact us by Phone **1.858.829.3082** Fax **1.858.481.8694**  
 Or you can Email us at: [info@bpsbioscience.com](mailto:info@bpsbioscience.com)  
 Please visit our website at: [www.bpsbioscience.com](http://www.bpsbioscience.com)