



# SZABO SCANDIC

Part of Europa Biosite

## Produktinformation



Forschungsprodukte & Biochemikalien



Zellkultur & Verbrauchsmaterial



Diagnostik & molekulare Diagnostik



Laborgeräte & Service

Weitere Information auf den folgenden Seiten!  
See the following pages for more information!



### Lieferung & Zahlungsart

siehe unsere [Liefer- und Versandbedingungen](#)

### Zuschläge

- Mindermengenzuschlag
- Trockeneiszuschlag
- Gefahrgutzuschlag
- Expressversand

### SZABO-SCANDIC HandelsgmbH

Quellenstraße 110, A-1100 Wien

T. +43(0)1 489 3961-0

F. +43(0)1 489 3961-7

[mail@szabo-scandic.com](mailto:mail@szabo-scandic.com)

[www.szabo-scandic.com](http://www.szabo-scandic.com)

[linkedin.com/company/szaboscandic](https://www.linkedin.com/company/szaboscandic) 

## Data Sheet

### BRD2, BD1 and BD2 (65-459)

Human, recombinant, N-terminal GST tag

**Catalog #:** 31024

Lot #: 120223G      Conc.: 0.2 mg/ml

**Formulated in:** 50 mM Tris-HCl, pH 7.5,  
 300 mM NaCl, 1 mM EDTA, 10% glycerol,  
 and 1 mM DTT.

**Stability:** >6 months at -80°C

**References:**

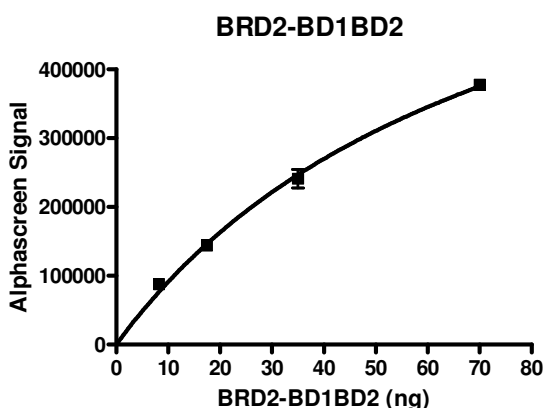
1. Umehara, T., *et al.*, *FEBS Lett.* 2010  
 Sep 24; **584(18)**: 3901-3908.
2. Shang, E., *et al.*, *J Cell Biochem.* 2011  
 Oct; **112(10)**: 2784-2793.

**Description:** Human Bromodomain containing 2, also known as BRD2, RING3 or RNF3, amino-acids 65 – 459 (GenBank Accession No. NM\_005104) with N-terminal GST tag, MW = 71.1 kDa, expressed in an *E. coli* expression system.

**Assay Conditions:** BRD2 protein is incubated with biotinylated acetyl-histone peptide substrate (Cat. #33000) in BRD assay buffer (Cat. #33001) in a 10 µl reaction for 1 hour at RT. AlphaLISA® GSH acceptor beads (Perkin Elmer) are added, followed by AlphaScreen® Streptavidin-conjugated donor beads (Perkin Elmer). After 1 hour incubation at RT, Alphacounts are measured.

**Application:** Useful for the study of bromodomain binding assays, screening inhibitors, and selectivity profiling.

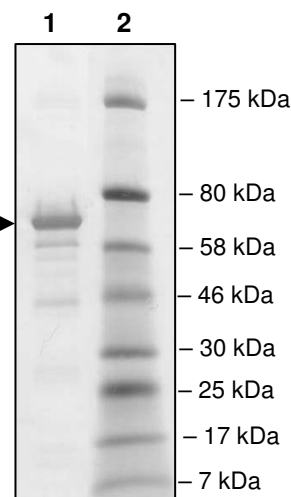
## Quality Assurance



**4-20% SDS-PAGE  
 Coomassie staining**

**Lane 1:**  
 0.5 µg BRD2  
**Lane 2:**  
 Protein Marker  
 BioLabs (#P7708L)

**MW:** 71.1 kDa  
**Purity:** ≥80%



OUR PRODUCTS ARE FOR RESEARCH USE ONLY. NOT FOR DIAGNOSTIC OR THERAPEUTIC USE.

To place your order, please contact us by Phone **1.858.829.3082** Fax **1.858.481.8694**  
 Or you can Email us at: [info@bpsbioscience.com](mailto:info@bpsbioscience.com)  
 Please visit our website at: [www.bpsbioscience.com](http://www.bpsbioscience.com)