



# SZABO SCANDIC

Part of Europa Biosite

## Produktinformation



Forschungsprodukte & Biochemikalien



Zellkultur & Verbrauchsmaterial



Diagnostik & molekulare Diagnostik



Laborgeräte & Service

Weitere Information auf den folgenden Seiten!  
See the following pages for more information!



### Lieferung & Zahlungsart

siehe unsere [Liefer- und Versandbedingungen](#)

### Zuschläge

- Mindermengenzuschlag
- Trockeneiszuschlag
- Gefahrgutzuschlag
- Expressversand

### SZABO-SCANDIC HandelsgmbH

Quellenstraße 110, A-1100 Wien

T. +43(0)1 489 3961-0

F. +43(0)1 489 3961-7

[mail@szabo-scandic.com](mailto:mail@szabo-scandic.com)

[www.szabo-scandic.com](http://www.szabo-scandic.com)

[linkedin.com/company/szaboscandic](https://www.linkedin.com/company/szaboscandic) 

## Data Sheet

### CECR2

Human, recombinant, N-terminal His tag

**Catalog #:** 31046

**Lot #:** 141009-G      **Conc.:** 0.44 mg/ml

**Formulated in:** 40 mM Tris-HCl, pH 8.0, 110 mM NaCl, 2.2 mM KCl. 0.04% Tween-20 and, 20% glycerol

**Stability:** >6 months at  $-80^{\circ}\text{C}$ . *Avoid freeze/thaw cycles. Storing diluted protein is not recommended, if necessary, use carrier protein (BSA 0.1 – 0.5%).*

#### References

1. Chen J, et al., *Int J Dev Biol.* 2010; **54(5)**: 925-9.
2. Lee SK, et al., *Mol Cells.* 2012; **34(1)**: 85-91.

**Description:** Human Bromodomain CECR2 (cat eye syndrome chromosome region, candidate 2), amino-acids 430-543 (GenBank Accession No. NM\_031413) with N-terminal His-tag, MW = 14.4 kDa, expressed in an *E. coli* expression system.

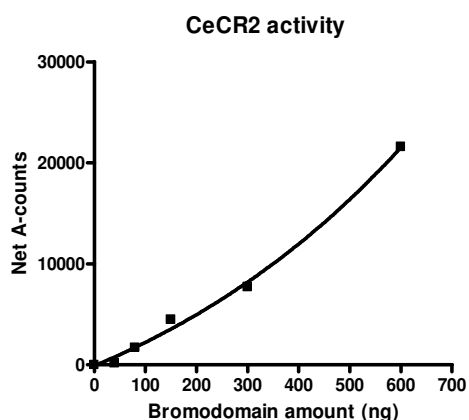
**Assay Conditions:** CECR2 was incubated with various amounts of BET ligand in assay buffer in a 10- $\mu\text{l}$  reaction for 30 min at RT. Reactions with H4 1-21[B] were prepared in parallel as control. AlphaLISA® Ni acceptor beads (1:250) were added and incubation continued for 30 min more. Finally, Streptavidin Donor beads (1:125) were added and mixture was incubated for 10 min at RT before A-counts were measured.

#### Application:

Useful for the study of bromodomain binding assays, screening inhibitors and selectivity profiling.

## Quality Assurance

### Specific Activity

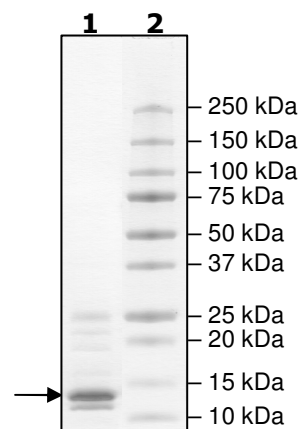


### 4-20% SDS-PAGE Coomassie staining

**Lane 1:**  
1.9  $\mu\text{g}$  CECR2

**Lane 2:**  
Protein Marker

**MW:** 14.4 kDa  
**Purity:**  $\geq 70\%$



OUR PRODUCTS ARE FOR RESEARCH USE ONLY. NOT FOR DIAGNOSTIC OR THERAPEUTIC USE.

To place your order, please contact us by Phone **1.858.829.3082** Fax **1.858.481.8694**

Or you can Email us at: [info@bpsbioscience.com](mailto:info@bpsbioscience.com)

Please visit our website at: [www.bpsbioscience.com](http://www.bpsbioscience.com)



6044 Cornerstone Court West, Suite E  
San Diego, CA 92121  
Tel: 1.858.829.3082  
Fax: 1.858.481.8694  
Email: [info@bpsbioscience.com](mailto:info@bpsbioscience.com)

**Sequence:**

**MHHHHHHTKDLFELDDFTAMYKVL DVVKAHKDSWPFLEPVDESYAPNYYQIIKAPM  
DISSMEKKLNGGLYCTKEEFVNDMKT MFRNCRKYNGESSEYTKMSDNLERCFHRAM  
MKHFPGED**

OUR PRODUCTS ARE FOR RESEARCH USE ONLY. NOT FOR DIAGNOSTIC OR THERAPEUTIC USE.

To place your order, please contact us by Phone **1.858.829.3082** Fax **1.858.481.8694**  
Or you can Email us at: [info@bpsbioscience.com](mailto:info@bpsbioscience.com)  
Please visit our website at: [www.bpsbioscience.com](http://www.bpsbioscience.com)