



# SZABO SCANDIC

Part of Europa Biosite

## Produktinformation



Forschungsprodukte & Biochemikalien



Zellkultur & Verbrauchsmaterial



Diagnostik & molekulare Diagnostik



Laborgeräte & Service

Weitere Information auf den folgenden Seiten!  
See the following pages for more information!



### Lieferung & Zahlungsart

siehe unsere [Liefer- und Versandbedingungen](#)

### Zuschläge

- Mindermengenzuschlag
- Trockeneiszuschlag
- Gefahrgutzuschlag
- Expressversand

### SZABO-SCANDIC HandelsgmbH

Quellenstraße 110, A-1100 Wien

T. +43(0)1 489 3961-0

F. +43(0)1 489 3961-7

[mail@szabo-scandic.com](mailto:mail@szabo-scandic.com)

[www.szabo-scandic.com](http://www.szabo-scandic.com)

[linkedin.com/company/szaboscandic](https://www.linkedin.com/company/szaboscandic) 

## Data Sheet

### TAF1L (1517-1649)

Human, recombinant, N-terminal GST tag  
**Catalog #:** 31106  
 Lot #: 120723-G      Conc.: 1.1 mg/ml

**Formulated in:** 45 mM Tris-HCl, pH 8.0,  
 124 mM NaCl, 2.4 mM KCl, and 10%  
 glycerol.

**Stability:** >6 months at -80 °C

**Reference:**

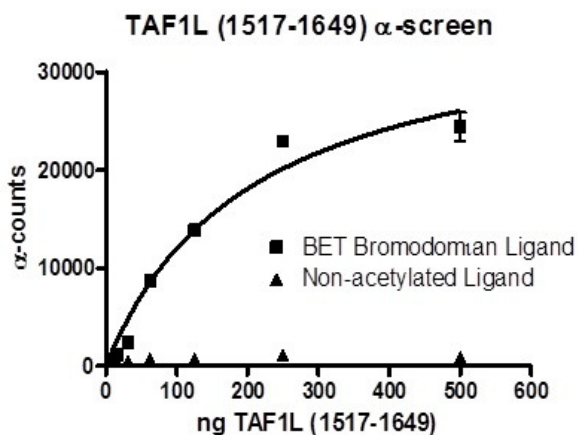
Wang, P.J., *et. al. Hum. Mol. Genet.* 2002  
 Sep 15; **11(19)**: 2341-2346.

**Description:** Human TAF1 RNA polymerase II, also known as TAF1L or TAT box binding protein (TBP)-associated factor, amino-acids 1517 – 1649 (GenBank Accession No. NM\_153809) with N-terminal GST tag, MW = 42.3 kDa, expressed in an *E. coli* expression system.

**Assay Conditions:** TAF1L (1517-1649) protein is incubated with biotinylated acetyl-histone peptide substrate (Cat. #33000) in TAF1L assay buffer in a 10 µl reaction for 1 hour at RT. AlphaLISA® GSH acceptor beads (Perkin Elmer) are added, and the mixture is incubated for 30 minutes at room temperature (RT). AlphaScreen® Streptavidin-conjugated donor beads (Perkin Elmer) are then added. After 10 minute incubation at RT, measure Alphacounts.

**Application:** Useful for the study of bromodomain binding assays, screening inhibitors, and selectivity profiling.

## Quality Assurance

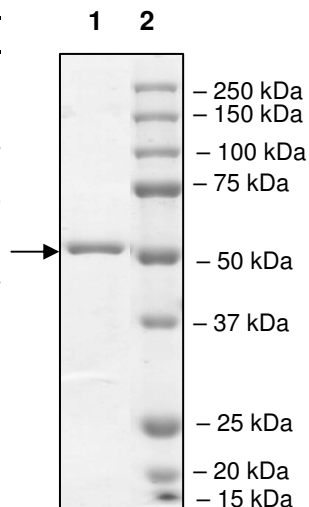


### 4-20% SDS-PAGE Coomassie staining

**Lane 1:**  
4 µg TAF1L

**Lane 2:**  
Protein Marker

**MW:** 42.3 kDa  
**Purity:** ≥99%



OUR PRODUCTS ARE FOR RESEARCH USE ONLY. NOT FOR DIAGNOSTIC OR THERAPEUTIC USE.

To place your order, please contact us by Phone **1.858.829.3082** Fax **1.858.481.8694**  
 Or you can Email us at: [info@bpsbioscience.com](mailto:info@bpsbioscience.com)  
 Please visit our website at: [www.bpsbioscience.com](http://www.bpsbioscience.com)



6044 Cornerstone Court West, Suite E  
San Diego, CA 92121  
Tel: 1.858.829.3082  
Fax: 1.858.481.8694  
Email: [info@bpsbioscience.com](mailto:info@bpsbioscience.com)

**Sequence:**

MSPILGYWKIKGLVQPTRLLEYLEEKYEEHLYERDEGDKWRNKKFELGLEFPNLPYYI  
DGDVKLTQSMAIRYIADKHNMLGGCPKERAIEISMLEGAVLDIRYGVSRIAYSKDFETLK  
VDFLSKLPEMLKMFEDRLCHKTYLNGDHVTHPDFMLYDALDVVLYMDPMCLDAFPKLV  
CFKKRIEAIQIDKYLKSSKYIAWPLQGQATFGGGDHPPKSDLEVLFGGPLGSLDDDD  
DQVAFSFILDNIVTQKMMAVPDSWPFHHPVNKKFVPDYKMIIVNPVDLETIRKNISKHK  
YQSRESFLDDVNLILANSVKYNGPESQYTKTAQEIVNICYQTITEYDEHLTQLEKDICTA  
KEAALEEAE

OUR PRODUCTS ARE FOR RESEARCH USE ONLY. NOT FOR DIAGNOSTIC OR THERAPEUTIC USE.

To place your order, please contact us by Phone **1.858.829.3082** Fax **1.858.481.8694**  
Or you can Email us at: [info@bpsbioscience.com](mailto:info@bpsbioscience.com)  
Please visit our website at: [www.bpsbioscience.com](http://www.bpsbioscience.com)