



SZABO SCANDIC

Part of Europa Biosite

Produktinformation



Forschungsprodukte & Biochemikalien



Zellkultur & Verbrauchsmaterial



Diagnostik & molekulare Diagnostik



Laborgeräte & Service

Weitere Information auf den folgenden Seiten!
See the following pages for more information!



Lieferung & Zahlungsart

siehe unsere [Liefer- und Versandbedingungen](#)

Zuschläge

- Mindermengenzuschlag
- Trockeneiszuschlag
- Gefahrgutzuschlag
- Expressversand

SZABO-SCANDIC HandelsgmbH

Quellenstraße 110, A-1100 Wien

T. +43(0)1 489 3961-0

F. +43(0)1 489 3961-7

mail@szabo-scandic.com

www.szabo-scandic.com

[linkedin.com/company/szaboscandic](https://www.linkedin.com/company/szaboscandic) 

Data Sheet

TAF1L (1398-1649)

Human, recombinant, N-terminal GST tag
Catalog #: 31107
 Lot #: 120724-G2 Conc.: 0.43 mg/ml

Formulated in: 45 mM Tris-HCl, pH 8.0, 124 mM NaCl, 2.4 mM KCl, and 10% glycerol.

Stability: >6 months at -80 °C

Reference:

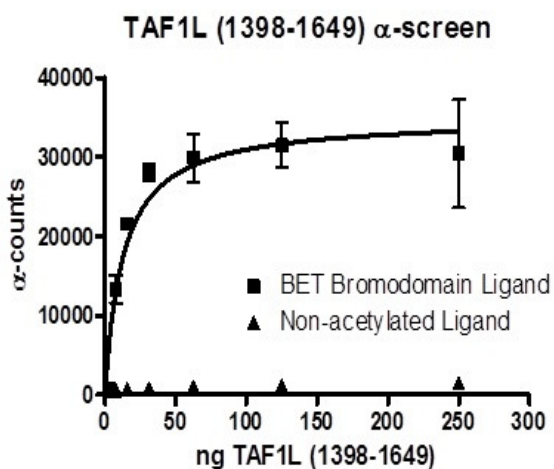
Wang, P.J., *et. al. Hum. Mol. Genet.* 2002 Sep 15; **11(19)**: 2341-2346.

Description: Human TAF1 RNA polymerase II, also known as TAF1L or TAT box binding protein (TBP)-associated factor, amino-acids 1398 – 1649 (GenBank Accession No. NM_153809) with N-terminal GST tag, MW = 56.1 kDa, expressed in an *E. coli* expression system.

Assay Conditions: TAF1L (1398-1649) protein is incubated with biotinylated acetyl-histone peptide substrate (Cat. #33000) in TAF1L assay buffer in a 10 µl reaction for 1 hour at RT. AlphaLISA® GSH acceptor beads (Perkin Elmer) are added, and the mixture is incubated for 30 minutes at room temperature (RT). AlphaScreen® Streptavidin-conjugated donor beads (Perkin Elmer) are then added. After 10 minute incubation at RT, measure Alphascreen counts.

Application: Useful for the study of bromodomain binding assays, screening inhibitors, and selectivity profiling.

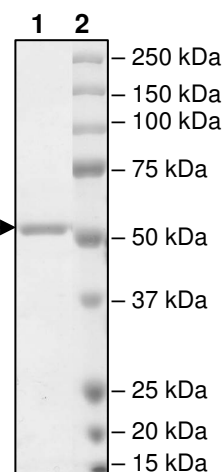
Quality Assurance



4-20% SDS-PAGE Coomassie staining

Lane 1:
0.6 µg TAF1L
Lane 2:
Protein Marker

MW: 56.1 kDa
Purity: ≥99%



OUR PRODUCTS ARE FOR RESEARCH USE ONLY. NOT FOR DIAGNOSTIC OR THERAPEUTIC USE.

To place your order, please contact us by Phone **1.858.829.3082** Fax **1.858.481.8694**
 Or you can Email us at: info@bpsbioscience.com
 Please visit our website at: www.bpsbioscience.com



6044 Cornerstone Court West, Suite E
San Diego, CA 92121
Tel: 1.858.829.3082
Fax: 1.858.481.8694
Email: info@bpsbioscience.com

Sequence:

MSPILGYWKIKGLVQPTRLLEYLEEKYEEHLYERDEGDKWRNKKFELGLEFPNLPYYI
DGDVKLTQSMAIRYIADKHNMLGGCPKERAIEISMLEGAVLDIRYGVSRIAYSKDFETLK
VDFLSKLPEMLKMFEDRLCHKTYLNGDHVTHPDFMLYDALDVVLYMDPMCLDAFPKLV
CFKKRIEAIPQIDKYLKSSKYIAWPLQGQATFGGGDHPPKSDLEVLFGGPLGSTDPMV
TLSSILESIINDMRDLPNTHPFHTPVNAKVVKDYYKIITRPMDLQTLRENVKCLYPSRE
EFREHLELIVKNSATYNGPKHSLTQISQSMLDLCDEKLKEKEDKLARLEKAINPLDD
DDQVAFSFLDNIVTQKMMAVPDSWPFHHPVNKKFVPDYKMIVNPVDLETIRKNISKH
KYQSRESFLDDVNLILANSVKYNGPESQYTKTAQEIVNICYQTITEYDEHLTQLEKDICT
AKEAALEEAE

OUR PRODUCTS ARE FOR RESEARCH USE ONLY. NOT FOR DIAGNOSTIC OR THERAPEUTIC USE.

To place your order, please contact us by Phone **1.858.829.3082** Fax **1.858.481.8694**
Or you can Email us at: info@bpsbioscience.com
Please visit our website at: www.bpsbioscience.com