



# SZABO SCANDIC

Part of Europa Biosite

## Produktinformation



Forschungsprodukte & Biochemikalien



Zellkultur & Verbrauchsmaterial



Diagnostik & molekulare Diagnostik



Laborgeräte & Service

Weitere Information auf den folgenden Seiten!  
See the following pages for more information!



### Lieferung & Zahlungsart

siehe unsere [Liefer- und Versandbedingungen](#)

### Zuschläge

- Mindermengenzuschlag
- Trockeneiszuschlag
- Gefahrgutzuschlag
- Expressversand

### SZABO-SCANDIC HandelsgmbH

Quellenstraße 110, A-1100 Wien

T. +43(0)1 489 3961-0

F. +43(0)1 489 3961-7

[mail@szabo-scandic.com](mailto:mail@szabo-scandic.com)

[www.szabo-scandic.com](http://www.szabo-scandic.com)

[linkedin.com/company/szaboscandic](https://www.linkedin.com/company/szaboscandic) 

## Data Sheet

### **BAZ2B (2054 – 2168)**

Human, recombinant, N-terminal HIS-tag

**Catalog #:** 31113

Lot #: 130411      Conc.: 2.02 mg/ml

**Formulated in:** 40 mM Tris-HCl, pH 8.0, 110 mM NaCl, 2.2 mM KCl, <0.01 % Tween-20, 20% glycerol.

**Stability:** >6 months at –80 °C

**References:**

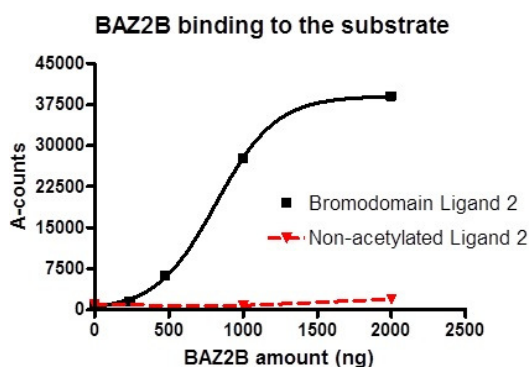
1. Jones, MH., *et al.*, *Genomics*. 2000 Jan1; **63(1)**: 40-5.
2. Arking, DE., *et al.*, *PLoS Genet*. 2011 Jun 30; **7(6)**: e1002158.

**Description:** Human Bromodomain adjacent to zinc finger domain, 2B or BAZ2B, amino-acids 2054 – 2168 (end), GenBank Accession No. NM\_013450 with N-terminal HIS-tag, MW = 14.3 kDa, expressed in an *E. coli* expression system.

**Assay Conditions:** Assay was performed using BAZ2B Inhibitor Screening Assay Kit, Cat. #32600. BAZ2B protein is incubated with biotinylated acetyl-histone peptide substrate in BRD assay buffer in a 10 µl reaction for 1 hour at RT. AlphaLISA® GSH acceptor beads (Perkin Elmer) were then added, and the mixture was incubated for 30 minutes at room temperature (RT). AlphaScreen® Streptavidin-conjugated donor beads (Perkin Elmer) were then added. After 10 minute incubation at RT, Alphacounts are measured.

**Application:** Useful for the study of bromodomain binding assays, screening inhibitors, and selectivity profiling.

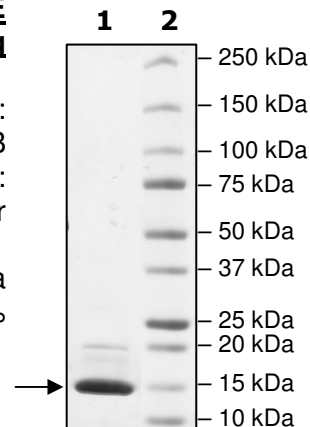
## **Quality Assurance**



**4-20% SDS-PAGE**  
**Coomassie staining**

**Lane 1:**  
 2 µg BAZ2B  
**Lane 2:**  
 Protein Marker

**MW:** 14.3 kDa  
**Purity:** ≥85%



OUR PRODUCTS ARE FOR RESEARCH USE ONLY. NOT FOR DIAGNOSTIC OR THERAPEUTIC USE.

To place your order, please contact us by Phone **1.858.829.3082** Fax **1.858.481.8694**  
 Or you can Email us at: [info@bpsbioscience.com](mailto:info@bpsbioscience.com)  
 Please visit our website at: [www.bpsbioscience.com](http://www.bpsbioscience.com)



6044 Cornerstone Court West, Suite E  
San Diego, CA 92121  
**Tel:** 1.858.829.3082  
**Fax:** 1.858.481.8694  
**Email:** [info@bpsbioscience.com](mailto:info@bpsbioscience.com)

**Protein Sequence:**

MHHHHHHSVKKPKRDDSKDLALCSMILTEMETHEDAWPFLLPVNLKLVPGYKKVIKKP  
MDFSTIREKLSSGQYPNLETFALDVRLVFDNCETFNEDDSDIGRAGHNMRKYFEKKWT  
DTFKVS

OUR PRODUCTS ARE FOR RESEARCH USE ONLY. NOT FOR DIAGNOSTIC OR THERAPEUTIC USE.

To place your order, please contact us by Phone **1.858.829.3082** Fax **1.858.481.8694**  
Or you can Email us at: [info@bpsbioscience.com](mailto:info@bpsbioscience.com)  
Please visit our website at: [www.bpsbioscience.com](http://www.bpsbioscience.com)